

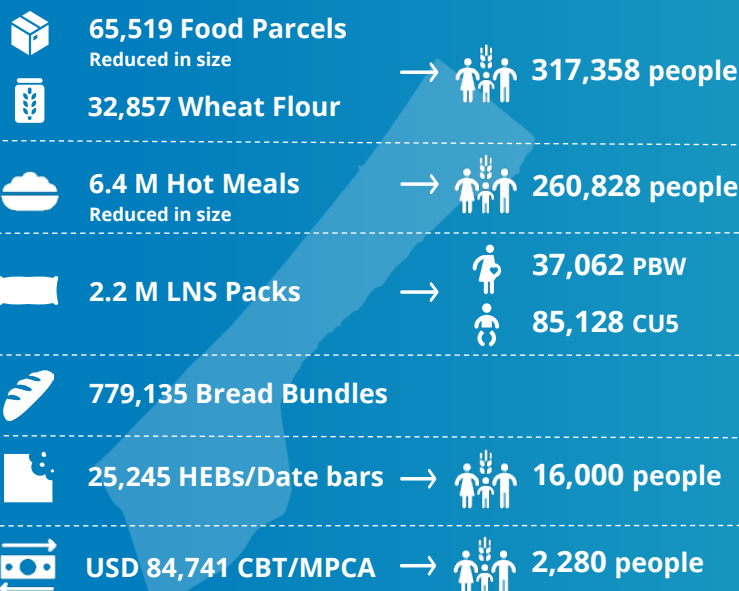
WFP PALESTINE EMERGENCY RESPONSE

External Situation Report 45

HIGHLIGHTS

- In the span of just four days following the long-awaited ceasefire on 19 January, more than 8,000 mt of WFP food assistance has entered Gaza without incident, exceeding the total food aid delivered into Gaza during the first two weeks of January. People in Gaza will be able to receive full rations, compared to one bag of flour per family per month previously.
- The de facto authorities in Gaza have been permitted to reinstate a civilian police force to stabilize the security situation and minimize the looting of trucks. Border crossings now run at full capacity, with operational scanning facilities and extended working hours.
- Meanwhile, WFP is concerned about the worsening humanitarian situation in the West Bank. Civilian casualties and restricted medical aid continue to be reported particularly in Jenin. Other Palestinian villages are also under attack, resulting in property destruction and injuries.

JANUARY IN NUMBERS – 1-18 January (before the ceasefire)



Palestine 667,680 people (1.4 million planned)

Gaza 478,106 people (1.1 million planned)

West Bank 189,574 people (338,000 planned)



WFP six-month net funding requirement

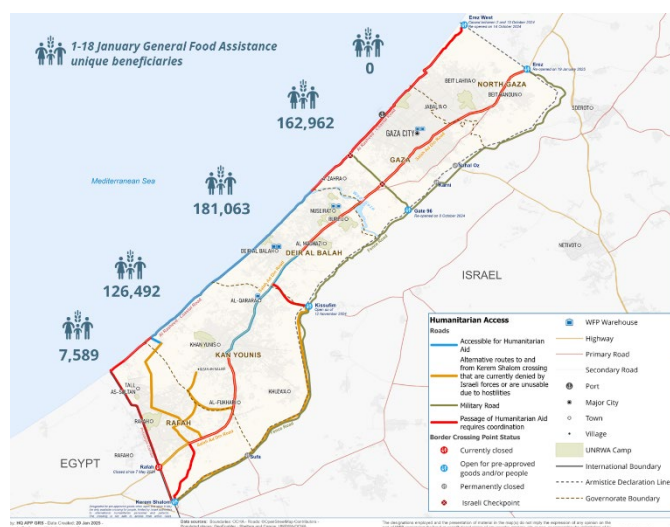
USD 300 M February to July 2025

These numbers are still subject to change due to the finalization of January 2024 reporting figures from partners. The total beneficiaries figure accounts for overlap between people receiving more than one type of assistance (LNS, HEB figures are not included). ACRONYMS: Pregnant and breastfeeding women and girls (PBWG) | Children under five (CU5) | High-Energy Biscuits (HEB) | Multipurpose Cash Assistance (MPCA) | Cash-based Transfers (CBT)

SITUATION UPDATE

- The ceasefire brokered by the US, Qatar, and Egypt on 19 January has enabled a significant humanitarian aid influx, with 600 trucks daily, including 50 carrying fuel. Since then, **WFP has delivered over 8,000 mt of food** exceeding the total food aid delivered into Gaza during the first two weeks of January.
- **Immediate response efforts are focused on the scale-up of food and cash-based assistance** through enhanced supply chain operations, partner collaboration, and community engagement, while addressing critical gaps in food distribution, nutrition, and market access.
- Emergency priorities include ready-to-eat rations (RTE), cash transfers, and bread production, alongside **strengthened logistics and infrastructure**.

- A continued ceasefire will allow **WFP to transition to recovery-focused initiatives**, including market and retailer restoration, livelihood support, food system



rebuilding, and school meal expansion, informed by ongoing assessments and partnerships. Additionally, WFP will track population movements to align food distribution with shifting needs, particularly if movement resumes between the north and south of Gaza.

WFP OPERATIONS

General Food Assistance (GFA) (1-18 January)

- In January, *before the ceasefire enforcement*, WFP provided food and cash-based assistance to **478,106 people in Gaza and 189,574 in the West Bank***. This was only achieved by **further reducing rations in Gaza** to the bare minimum due to the severe shortage of supplies. **The total beneficiaries figure accounts for overlap between people receiving more than one type and duration of assistance. Monthly distribution figures are estimates and subject to change pending final beneficiary reconciliation.*
- WFP distributed around 65,519 emergency RTEs and 32,857 25-kg wheat flour bags to 317,358 displaced people, at reduced rations, barely sufficient for families. **However, with increased food dispatches under the ceasefire, WFP can start distributing full rations**—two RTE food parcels and a 25kg bag of wheat flour per household—a major improvement from previous months.
- Only 5 out of 20 WFP bakeries in Gaza were operational prior to the ceasefire. All Bakeries in North Gaza remained closed, while severe fuel shortages limited operations at the five operational bakeries in Gaza City. In central and southern Gaza, all eight bakeries remained shut due to supply shortages. WFP-supported bakeries in Gaza City produced over **779,135 bread bundles**.
- The resumption of WFP-subsidized bread production** depends on a stable food supply and wheat flour price regulation to prevent overcrowding.
- WFP provided **6.4 million hot meals at reduced rations to 260,828 people** through 65 kitchens across the Strip.
- A total of 37,062 pregnant and breastfeeding women and girls, along with 85,128 children under five**, received 2.2 million lipid-based nutritional supplement packs as complementary feeding assistance to meet their increased nutritional needs.
- In the West Bank, 181,125 beneficiaries** redeemed USD 2.5 million through cash-based transfers. In parallel, **8,449 people received in-kind food distributions**, consisting of 4,581 rations of food commodities.

Supply chain

- Since the start of the crisis, **WFP has delivered 11,772 WFP trucks with some 184,280 mt of food** into Gaza.

TOTAL AID DELIVERED TO THE GAZA STRIP IN JANUARY

379 WFP TRUCKS | 4,950 mt | 509 PARTNER TRUCKS | 9,027 pallets

EGYPT CORRIDOR	JORDAN CORRIDOR	ASHDOD CORRIDOR
100 WFP TRUCKS 1,221 mt	92 WFP TRUCKS 1,324 mt	187 WFP TRUCKS 2,405 mt
121 PARTNER TRUCKS 1,751 pallets	192 PARTNER TRUCKS 3,521 pallets	196 PARTNER TRUCKS 3,755 pallets
Via Kerem Shalom and Gate 96	Via West Erez (Zikim) and Kerem Shalom	Via West Erez (Zikim) and Gate 96

- Following the ceasefire on 19 January, three border crossings are operational:
 - West Erez/Zikim: Handles commodities from the Jordan corridor.
 - Erez: Facilitates goods via Israel, the Ashdod corridor, back-to-back convoys through the Jordan corridor, and the West Bank.
 - Kerem Shalom/Karam Abu Salem: Processes goods from Israel and the Egypt corridor, including trucks carrying fuel and gas.

CLUSTERS AND COMMON SERVICES

Food Security Sector (FSS)

- By mid-January, over 210,000 mt of food commodities have been procured or are under procurement by FSS partners, enough to feed Gaza's population for over six months. These supplies must be urgently delivered.
- FSS partners have implemented measures like free bread distribution, community kitchens, and contracting retailer shops as bread-selling points to ensure safe access and reduce overcrowding.
- Preparations to scale up food distribution during the ceasefire include enhancing storage, identifying additional partners, and expanding distribution points to improve access across Gaza.

Logistics Cluster

- Following the ceasefire, and with the aid influx, the Logistics Cluster is enhancing efforts to coordinate humanitarian aid delivery via various corridors. The team supports preparations to facilitate the clearance of partner shipments.
- Between 1 and 18 January, the Logistics Cluster facilitated four direct convoys from Amman to Erez West, carrying 567 mt of food, WASH, and shelter items across 50 trucks on behalf of nine partners.
- To date, the Logistics Cluster has consolidated 30,868 m³ of humanitarian cargo at the common warehouse in Amman and received 60,681 m³ for common storage inside Gaza.

Emergency Telecommunications Cluster (ETC)

- Following the ceasefire, advocacy efforts aim to ease import restrictions, ensuring partners are able to access needed resources.

ACCOUNTABILITY TO AFFECTED POPULATIONS

- WFP's self-registration link** has facilitated over 1.8 million registrations for assistance since the start of the crisis, including over 52,949 during January 2025. **WFP's inter-agency hotline** recorded 23,626 cases, with 68 percent related to WFP assistance.