

Report Production Date: 05 December 2024 | Data collected up till 4 pm on 04 December 2024

Overview

The International Organization for Migration (IOM) conducts daily monitoring of population movements to support preparedness and response efforts. This work is carried out in partnership with the Disaster Risk Management Unit, technically supported by the United Nations Development Programme, to triangulate and verify data from IOM’s mobility tracking exercise and the Lebanese Red Cross household registration exercise.

As of 04 December 2024, data indicates that 786,443 internally displaced persons (IDPs) have begun returning to their communities. Given the complexity and fluidity of population movements in the country, these observed returns cannot be considered permanent and should be viewed as a snapshot in time, as many people remain on the move.

Population figures for collective sites have been provided by the Lebanese Red Cross and the Disaster Risk Management Unit, with the technical support of the United Nations Development Programme.

IDP count – By date



IDPs by district of arrival and district of origin

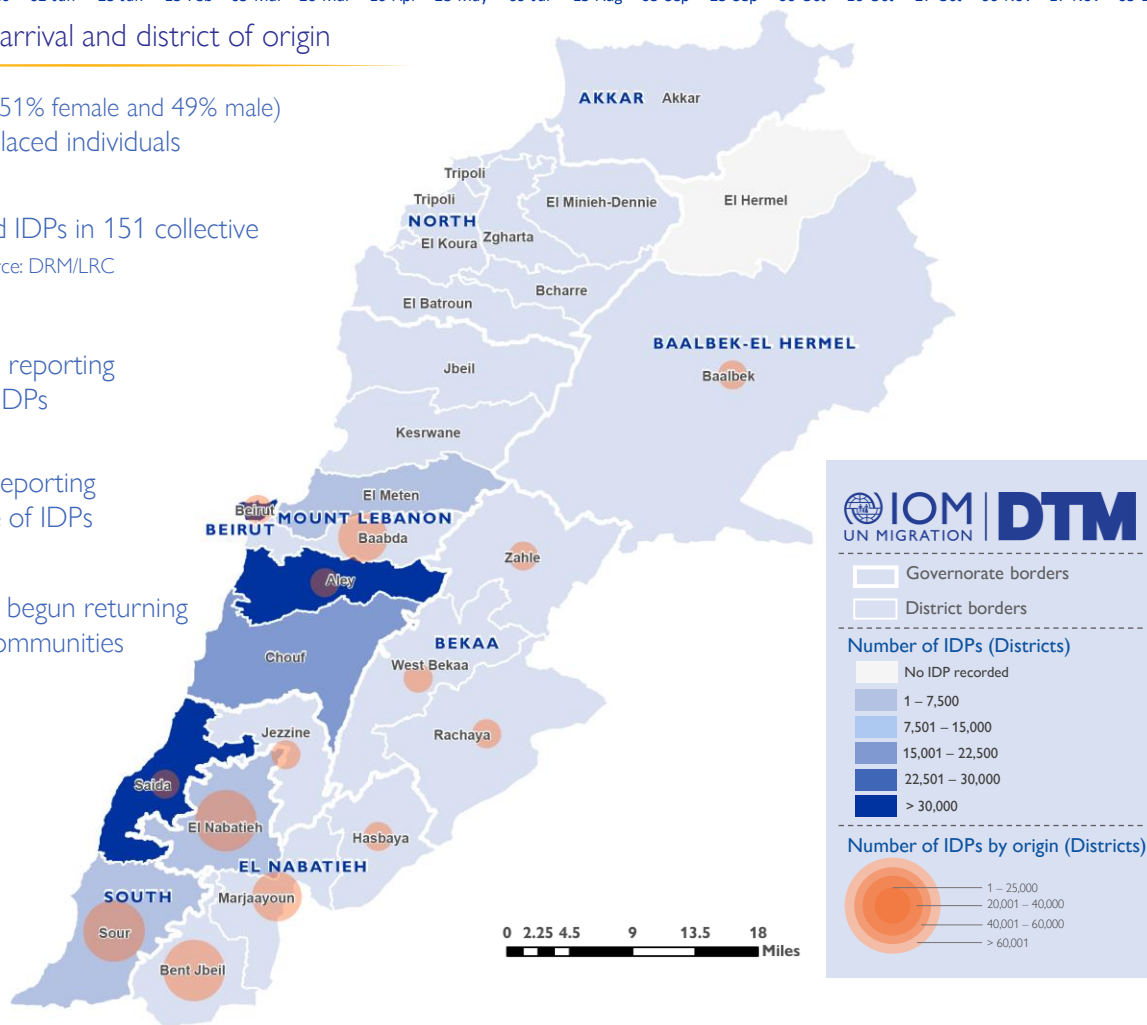
201,820 (51% female and 49% male)
Total displaced individuals

8,972
Registered IDPs in 151 collective sites - Source: DRM/LRC

573
Cadasters reporting arrival of IDPs

14
Districts reporting departure of IDPs

786,443
IDPs have begun returning to their communities



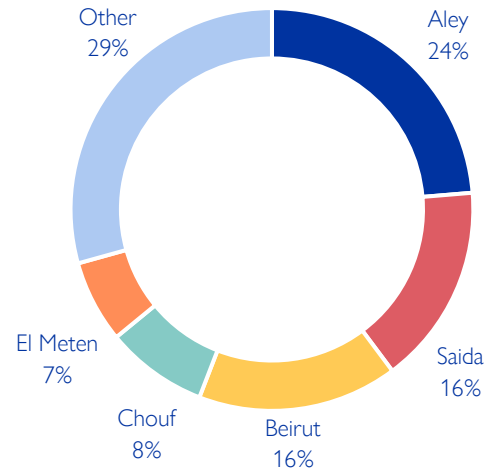
This map is for illustration purposes only. Names and boundaries on this map do not imply official endorsement or acceptance by IOM.

*DRM/LRC conducts household level registration for IDPs to inform direct assistance. This complements IOMs mobility tracking which captures an estimate of the total IDP population to inform national preparedness and response planning, as well as resource mobilisation.

Displacement within Lebanon – By district of arrival

Governorate	District	# of Cadasters	IDPs
Mount Lebanon	Aley	46	47,777
South	Saida	25	32,543
Beirut	Beirut	12	32,433
Mount Lebanon	Chouf	42	16,548
Mount Lebanon	El Meten	46	13,362
South	Sour	9	12,711
El Nabatieh	El Nabatieh	30	9,542
Mount Lebanon	Baabda	32	6,825
Mount Lebanon	Jbeil	42	6,143
Akkar	Akkar	91	4,837
Mount Lebanon	Kesrwane	28	2,912
El Nabatieh	Hasbaya	9	2,697
North	El Minieh-Dennie	23	2,321
North	El Koura	23	1,996
Bekaa	Zahle	17	1,792
El Nabatieh	Bent Jbeil	10	1,626
North	Tripoli	10	1,608
Bekaa	West Bekaa	13	1,551
South	Jezzine	13	551
North	El Batroun	17	541
Bekaa	Rachaya	8	479
North	Bcharre	4	380
North	Zgharta	9	320
El Nabatieh	Marjaayoun	2	174
Baalbek-El Hermel	Baalbek	12	151
Total		573	201,820

Chart 1: IDPs distribution by district of arrival

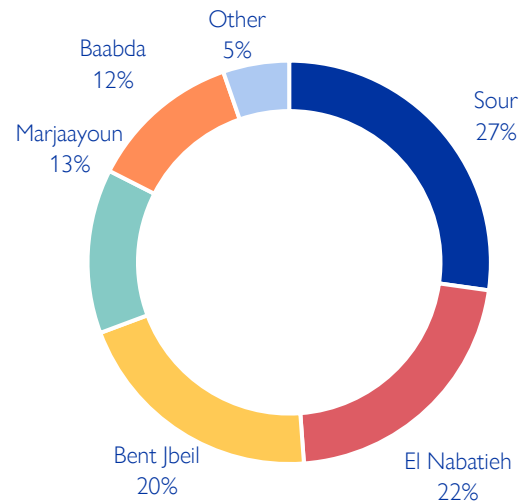


As of 04 December, Lebanon has recorded 201,820 internally displaced persons (IDPs), showing around 78% decrease since 24 November. IDPs have sought safety in 573 cadasters throughout Lebanon. Displacement has been observed in 25 districts across all eight governorates. 71% of the IDPs are in five districts out of the total 26 districts hosting IDPs—specifically, Aley, Saida, Beirut, Chouf, and El Meten.

Displacement within Lebanon – By district of departure

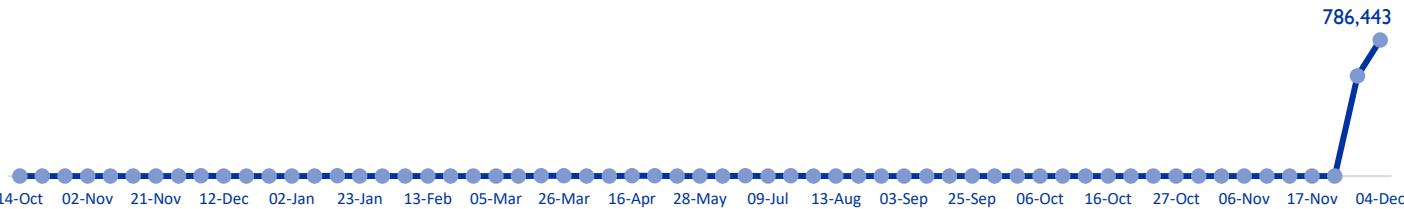
Governorate	District	IDPs
South	Sour	54,937
El Nabatieh	El Nabatieh	43,620
El Nabatieh	Bent Jbeil	41,323
El Nabatieh	Marjaayoun	26,594
Mount Lebanon	Baabda	24,643
Baalbek-El Hermel	Baalbek	3,672
South	Saida	3,679
El Nabatieh	Hasbaya	2,023
Bekaa	West Bekaa	284
Beirut	Beirut	219
Bekaa	Zahle	167
South	Jezzine	164
Bekaa	Rachaya	249
Mount Lebanon	Aley	246
Total		201,820

Chart 2: IDPs distribution by district of departure





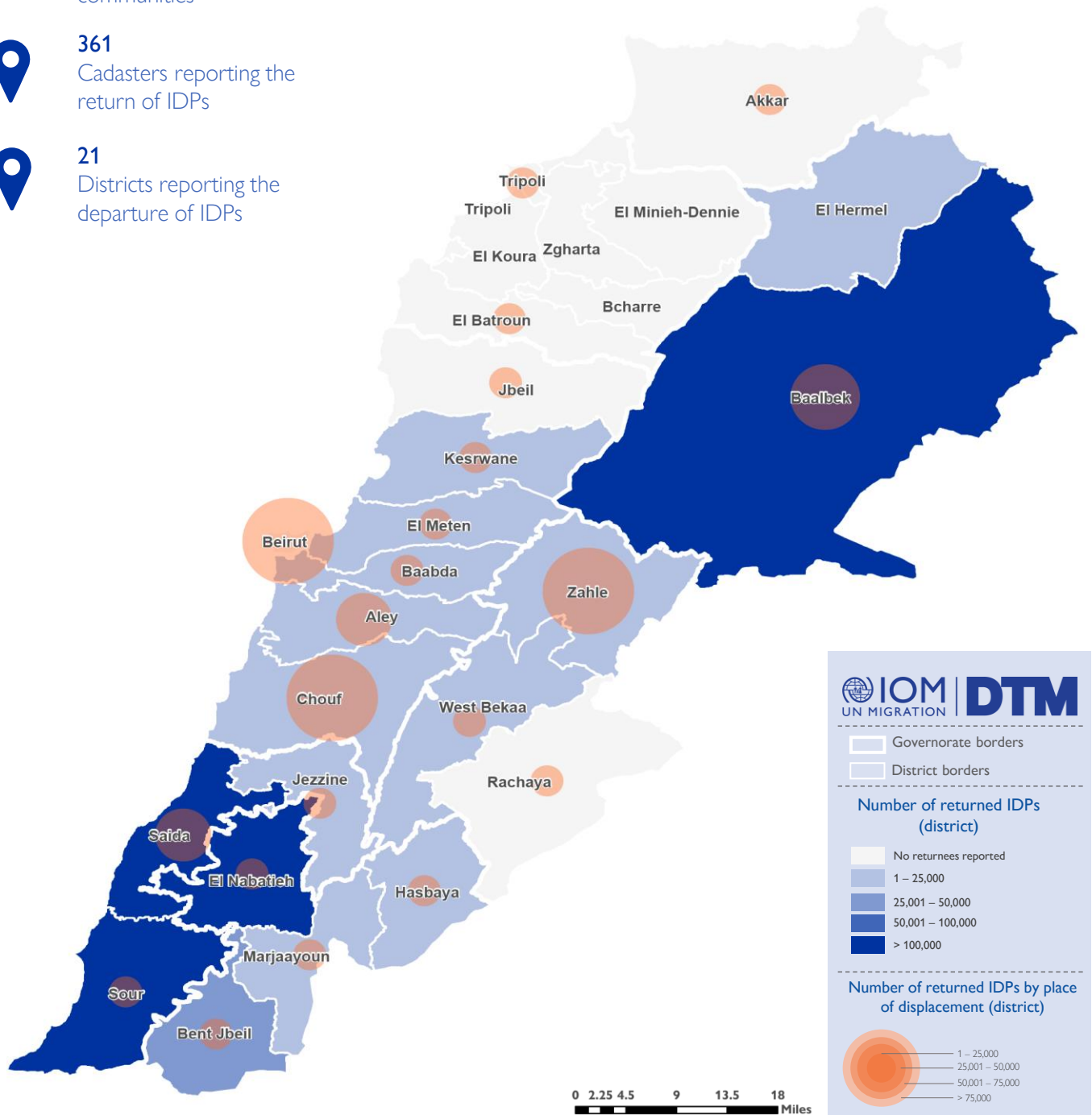
The majority of IDPs (95%) originate from five districts, specifically, 27% are from Sour, 22% are from El Nabatieh, 20% are from Bent Jbeil, 13% are from Marjaayoun, and 12% are from Baabda. The remaining 5% originate from 10 different districts.

Returned IDP count – By date



Returned IDP movements by district

-  **786,443**
IDPs have begun returning to their communities
-  **361**
Cadasters reporting the return of IDPs
-  **21**
Districts reporting the departure of IDPs

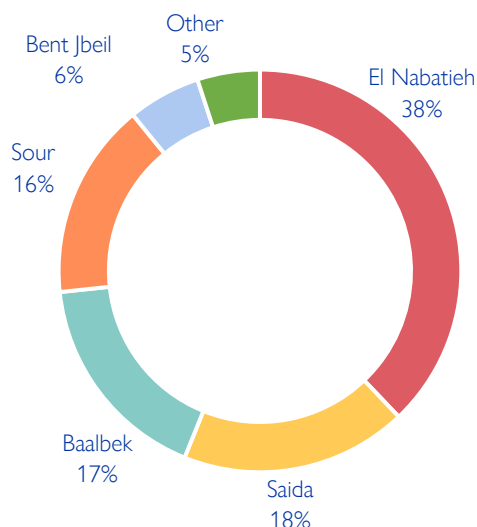


This map is for illustration purposes only. Names and boundaries on this map do not imply official endorsement or acceptance by IOM.

IDP return movement within Lebanon – By district of arrival

Governorate	District	Returned IDPs
El Nabatieh	El Nabatieh	296,591
South	Saida	142,565
Baalbek-El Hermel	Baalbek	134,755
South	Sour	123,680
El Nabatieh	Bent Jbeil	45,790
Baalbek-El Hermel	El Hermel	16,910
Mount Lebanon	Baabda	6,775
Bekaa	Zahle	5,500
Bekaa	West Bekaa	3,905
El Nabatieh	Marjaayoun	2,415
South	Jezzine	2,395
Mount Lebanon	Aley	1,950
Mount Lebanon	Chouf	1,950
El Nabatieh	Hasbaya	665
Mount Lebanon	Kesrwane	347
Mount Lebanon	El Meten	250
Total		786,443

Chart 4: Returnees distribution by district of arrival

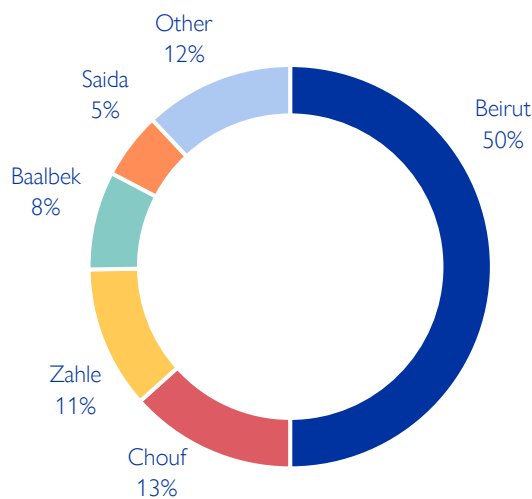


As of 4 December, a total of 786,443 returned IDPs have been recorded. The largest proportion of these returnees is in El Nabatieh governorate, particularly in the El Nabatieh district, which hosts 296,591 individuals, accounting for 38% of the total. The South governorate, specifically Saida district, follows with 142,565 returnees (18%), while Baalbek district in Baalbek-El Hermel governorate accounts for 134,755 returnees (17%).

Returned IDPs by place of displacement within Lebanon – By district of departure

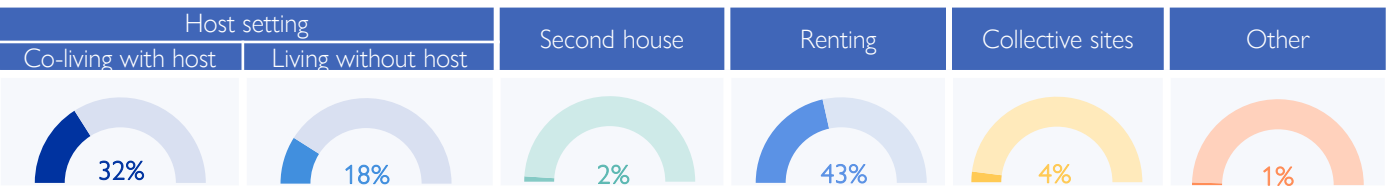
Governorate	District	Returned IDPs
Beirut	Beirut	393,356
Mount Lebanon	Chouf	105,125
Bekaa	Zahle	89,800
Baalbek-El Hermel	Baalbek	62,040
South	Saida	41,945
Mount Lebanon	Aley	37,555
Mount Lebanon	Kesrwane	18,000
Mount Lebanon	Jbeil	6,750
Akkar	Akkar	6,550
North	Tripoli	6,450
Mount Lebanon	El Meten	4,990
North	El Batroun	2,950
South	Jezzine	2,500
El Nabatieh	Bent Jbeil	2,450
El Nabatieh	El Nabatieh	1,997
Mount Lebanon	Baabda	1,450
Bekaa	Rachaya	1,300
Bekaa	West Bekaa	900
South	Sour	310
El Nabatieh	Hasbaya	20
El Nabatieh	Marjaayoun	5
Total		786,443

Chart 5: IDPs distribution by district of departure



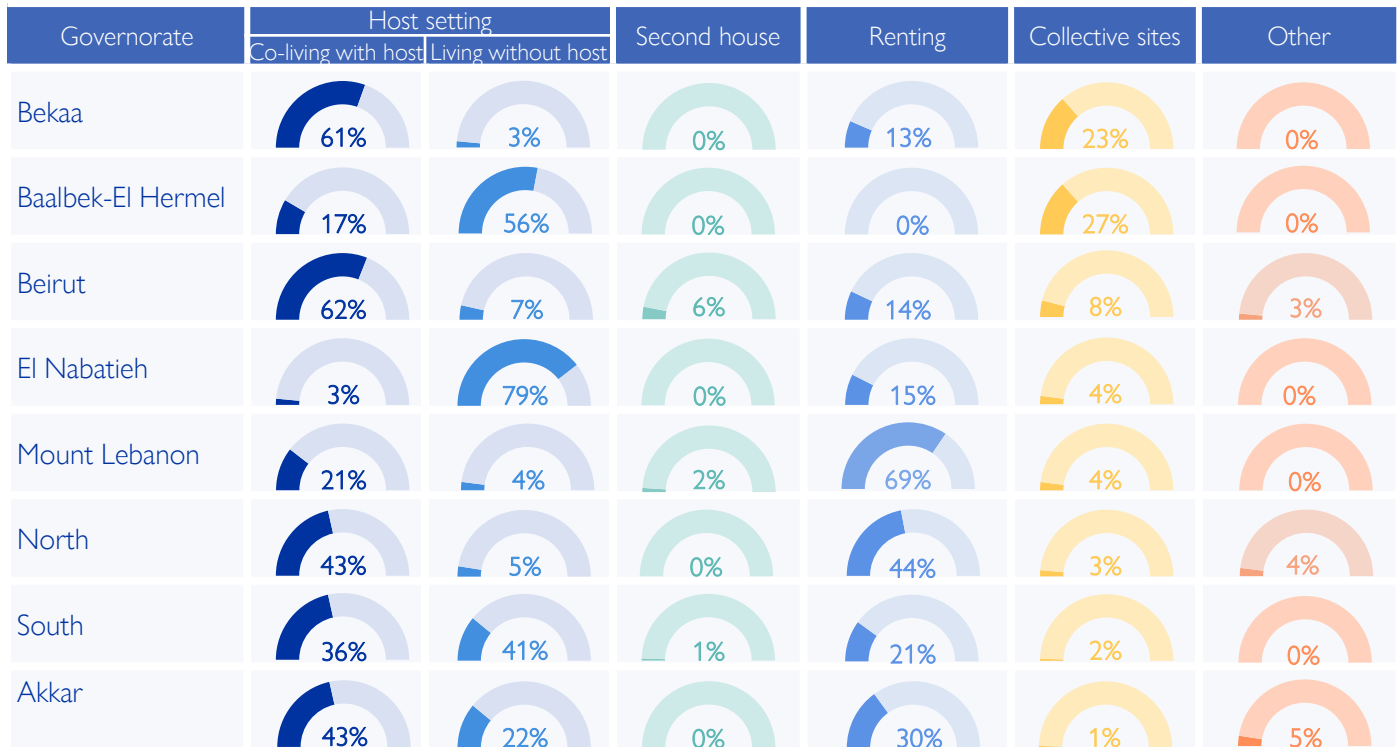
The majority of the returnees (88%) departed from five districts, specifically, 50% are from Beirut, 13% are from Chouf, 22% are from Zahle, 8% are from Baalbek, and 5% are from Saida. The remaining 12% originate from 15 different districts.

IDPs distribution by shelter type – By Governorate



Around 50% of IDPs are currently living in host settings, around 4% are housed in 151 collective sites, while 43% have opted for rental housing. Another 2% have relocated to their secondary residences. Meanwhile, 1% are categorized under “other”, this includes unfinished buildings, tents, parks, on the streets, or self-settled sites.

Of the 50% in host settings, 36,957 are co-living with non-internally displaced families, while 64,187 reside separately. Notably, 54% of the 101,144 individuals in host settings are living in overcrowded conditions according to the perception of IOM DTM key informants.



Displacement demographics

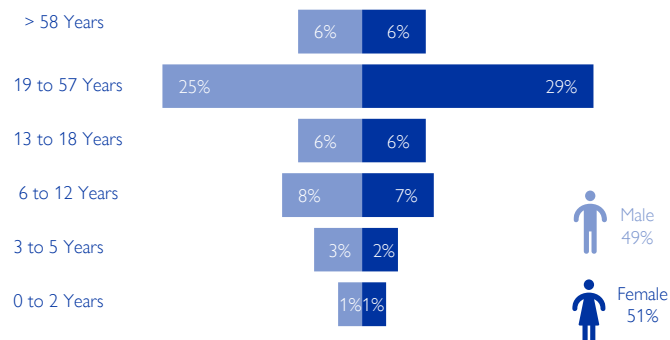


Chart 4: Displacement demographics – Based on Round 63

Individuals under 18 years old comprise 34% of IDPs, while female adults account for 35% and male adults make up 31%.

Note: These figures represent sample data of 2 households per location provided by key informants and do not reflect the entire IDP population in each area.

Methodology

The objective of the Mobility Snapshot is to support the humanitarian community in preparedness and response planning. Multi-layered data is routinely captured through Rounds using a suite of methodological tools designed to track and monitor displacement. These tools are in line with the [DTM Global Methodological Framework](#).

Data is collected nationwide through a combination of face-to-face and remote data collection methods, utilizing a network of over 50 enumerators and 1,500 key informants. These key informants consist of government officials, mukhtars, community representatives, and neighborhood focal points.

The following citation is required when using any data and information included in this information product: "International Organization for Migration (IOM), December 2024. DTM Mobility Snapshot, Round 66 IOM, Lebanon". For more information on terms and conditions of DTM reports and information products, please refer to <https://dtm.iom.int/terms-and-conditions>.