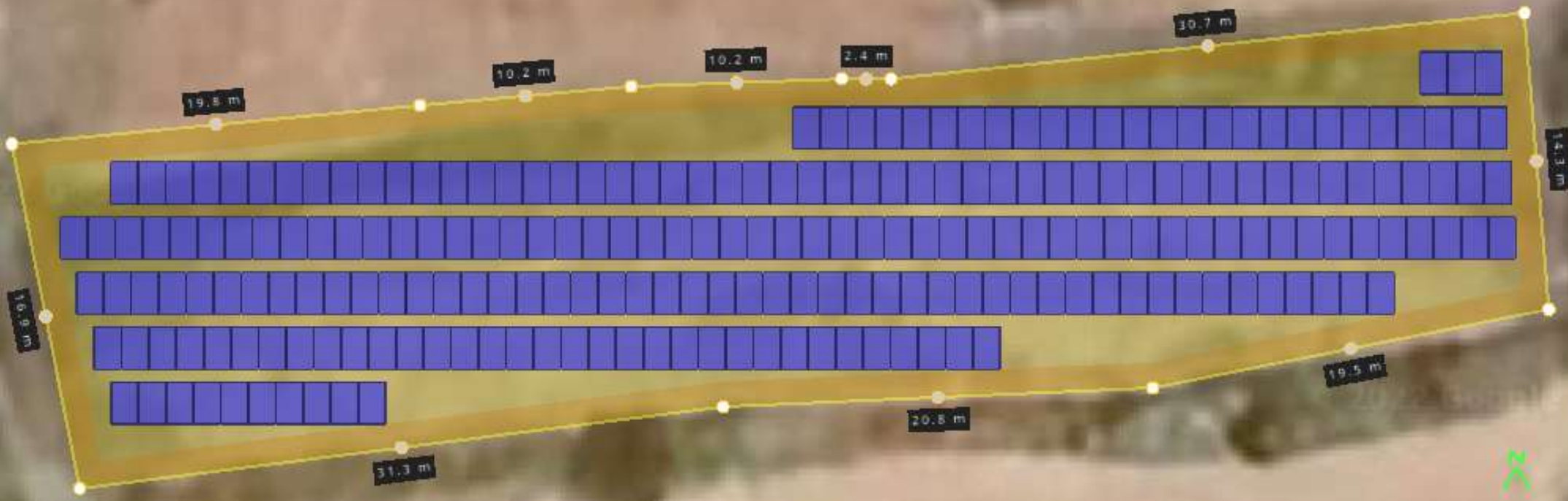
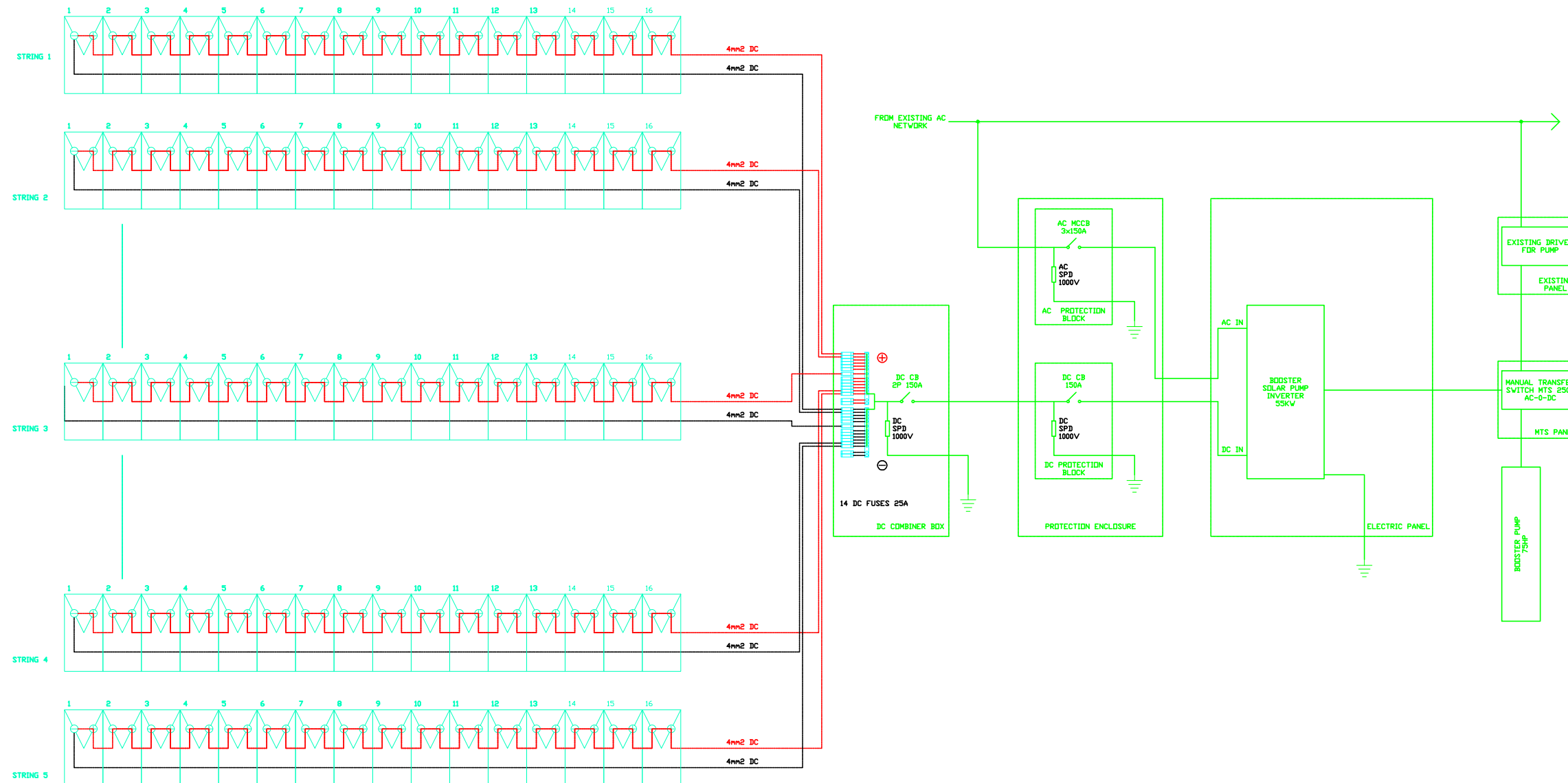


© 2022 Google





NOTE:

- 1- ELECTRICAL LAYOUT DRAWINGS ARE INDICATIVE.
- 2- THE PROPOSED DRAWINGS DO NOT SHOW ALL OF THE SYSTEM'S COMPONENTS AND THEY SHALL BE USED AS DESIGN GUIDELINES.
- 3- DO NOT SCALE FROM THESE DRAWINGS.
- 4- THE CONTRACTOR SHALL SUBMIT COMPLETE SHOP DRAWINGS, INCLUDING ANY AMENDMENTS AND MODIFICATIONS, FOR THE APPROVAL OF THE SUPERVISION ENTITY AT THE SLWE.
- 5- SEQUENCE OF OPERATION SCENARIOS SHALL BE PROPOSED BY THE CONTRACTOR FOR THE APPROVAL OF THE SUPERVISION ENTITY AT THE SLWE.
- 6- THE CONTRACTOR HAS TO PROVIDE COMPLETE CALCULATION NOTES FOR COMPONENTS SIZING.
- 7- THE CONTRACTOR SHALL SUBMIT COMPLETE SIMULATION REPORT SHOWING THE SYSTEM'S POWER GENERATION FORECAST AROUND THE YEAR FOR 12 MONTHS FOR THE APPROVAL OF THE SUPERVISION ENTITY AT THE SLWE.
- 8- ALL METALLIC STRUCTURES SHALL BE EARTHED LOCALLY.
- 9- CABLE JOINTING AND SPLICING SHALL NOT BE USED UNLESS INSTRUCTED BY THE ENGINEER.
- 10- ANY DIVERGENCE FROM THE DESIGN SHALL BE JUSTIFIED.
- 11- DATA SHEETS FOR ALL EQUIPMENT SHALL BE PROVIDED BY THE CONTRACTOR FOR THE APPROVAL OF THE SUPERVISION ENTITY AT THE SLWE PRIOR TO ORDERING THE EQUIPMENT. CHARACTERISTICS OF THE PROPOSED EQUIPMENT MAY DIFFER FROM THOSE PROVIDED IN THE DRAWINGS.
- 12- TECHNICAL MATERIAL SUBMITTALS SHALL BE PROVIDED FOR THE APPROVAL OF THE SUPERVISION ENTITY AT THE SLWE.

LEGEND:

REV.	DATE	DRAWN	DESIGNED	CHECKED
0	08/2022	H.KAISSI	H.KAISSI	A.KHALIL

CLIENT:
REPUBLIC OF LEBANON
MINISTRY OF ENERGY AND WATER
SOUTH LEBANON WATER AND WASTE
WATER ESTABLISHMENT (SLWWE)

PROJECT NAME:
NOMAIRYIEH WELL#3 SOLAR POWERED
PUMPING STATION
 مؤسسة مياه لبنان الجنوبي

DRAWING TITLE:
148 KWp SOLAR FARM
SINGLE LINE DIAGRAM

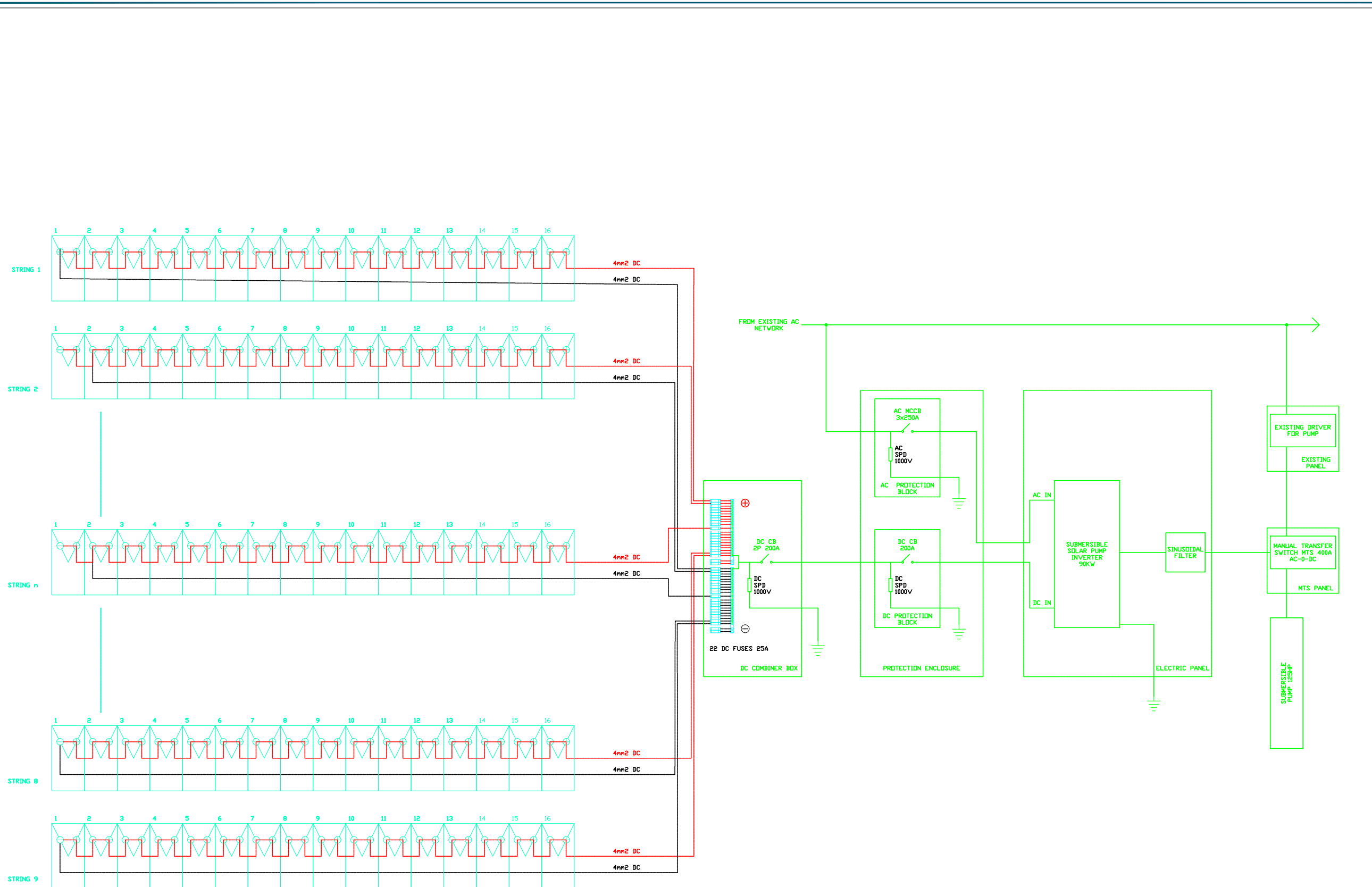
DRAWING NUMBER:

NOM-EL	-	PV	-	3	-
REFERENCE		DIVISION		SHEET NO.	REV.

SCALE : N.T.S **DATE :** AUGUST 2022
DISCIPLINE : SOLAR **PHASE :** DESIGN

ARCH	CIVIL	MECH	ELECT

مدرسة الهندسة والبناء



- NOTE:**
- 1- ELECTRICAL LAYOUT DRAWINGS ARE INDICATIVE.
 - 2- THE PROPOSED DRAWINGS DO NOT SHOW ALL OF THE SYSTEM'S COMPONENTS AND THEY SHALL BE USED AS DESIGN GUIDELINES.
 - 3- DO NOT SCALE FROM THESE DRAWINGS.
 - 4- THE CONTRACTOR SHALL SUBMIT COMPLETE SHOP DRAWINGS, INCLUDING ANY AMENDMENTS AND MODIFICATIONS, FOR THE APPROVAL OF THE SUPERVISION ENTITY AT THE SLWE.
 - 5- SEQUENCE OF OPERATION SCENARIOS SHALL BE PROPOSED BY THE CONTRACTOR FOR THE APPROVAL OF THE SUPERVISION ENTITY AT THE SLWE.
 - 6- THE CONTRACTOR HAS TO PROVIDE COMPLETE CALCULATION NOTES FOR COMPONENTS SIZING.
 - 7- THE CONTRACTOR SHALL SUBMIT COMPLETE SIMULATION REPORT SHOWING THE SYSTEM'S POWER GENERATION FORECAST AROUND THE YEAR FOR 12 MONTHS FOR THE APPROVAL OF THE SUPERVISION ENTITY AT THE SLWE.
 - 8- ALL METALLIC STRUCTURES SHALL BE EARTHED LOCALLY.
 - 9- CABLE JOINTING AND SPLICING SHALL NOT BE USED UNLESS INSTRUCTED BY THE ENGINEER.
 - 10- ANY DIVERGENCE FROM THE DESIGN SHALL BE JUSTIFIED.
 - 11- DATA SHEETS FOR ALL EQUIPMENT SHALL BE PROVIDED BY THE CONTRACTOR FOR THE APPROVAL OF THE SUPERVISION ENTITY AT THE SLWE PRIOR TO ORDERING THE EQUIPMENT. CHARACTERISTICS OF THE PROPOSED EQUIPMENT MAY DIFFER FROM THOSE PROVIDED IN THE DRAWINGS.
 - 12- TECHNICAL MATERIAL SUBMITTALS SHALL BE PROVIDED FOR THE APPROVAL OF THE SUPERVISION ENTITY AT THE SLWE.

LEGEND:

REV.	DATE	DRAWN	DESIGNED	CHECKED
0	08/2022	H.KAISSI	H.KAISSI	A.KHALIL

CLIENT:
REPUBLIC OF LEBANON
 MINISTRY OF ENERGY AND WATER
 SOUTH LEBANON WATER AND WASTE WATER ESTABLISHMENT (SLWWE)

PROJECT NAME:
 NOMAIRYIEH WELL#3 SOLAR POWERED PUMPING STATION
 مؤسسة مياه لبنان الجنوبي

DRAWING TITLE:
 148 KWp SOLAR FARM SINGLE LINE DIAGRAM

DRAWING NUMBER:

NOM-EL	-	PV	-	2	-
REFERENCE		DIVISION		SHEET NO.	REV.

SCALE : N.T.S. **DATE :** AUGUST 2022
DISCIPLINE : SOLAR **PHASE :** DESIGN

مدرسة الهندسة الكهربائية والالكترونيات
 جامعة البعث - صيدا - لبنان

SCHEDULE No. 1
PV PANELS

TYPE	MONOCRYSTALLINE
NOMINAL POWER	> 660 Wp
MODULE EFFICIENCY	> 21.6%
QUANTITY	224
DIMENSIONS LxWxH	~ 2390x1304x35 mm
J-BOX DEGREE OF PROTECTION	IP 67
CONNECTOR INCLUDED	MC4

SCHEDULE No. 3
BOOSTER INVERTER

TYPE	SOLAR PUMP INVERTER
CAPACITY	55 KW
QUANTITY	1 NOS.
NUMBER OF PHASES	3
VOLTAGE, FREQUENCY RANGE	380 V, 50 Hz +/- 10%
DEGREE OF PROTECTION	IP 54 INSIDE CABINET
REMARKS	-

SCHEDULE No. 2
SUBMERSIBLE INVERTER

TYPE	SOLAR PUMP INVERTER
CAPACITY	90 KW
QUANTITY	1 NOS.
NUMBER OF PHASES	3
VOLTAGE, FREQUENCY RANGE	380 V, 50 Hz +/- 10%
DEGREE OF PROTECTION	IP 54 INSIDE CABINET
REMARKS	-

SCHEDULE No. 4
PUMP SPECIFICATIONS

TYPE	SUBMERSIBLE PUMP	BOOSTER PUMP
POWER RATING	125 HP	75 HP

NOTE:

- 1- ELECTRICAL LAYOUT DRAWINGS ARE INDICATIVE.
- 2- THE PROPOSED DRAWINGS DO NOT SHOW ALL OF THE SYSTEM'S COMPONENTS AND THEY SHALL BE USED AS DESIGN GUIDELINES.
- 3- DO NOT SCALE FROM THESE DRAWINGS.
- 4- THE CONTRACTOR SHALL SUBMIT COMPLETE SHOP DRAWINGS, INCLUDING ANY AMENDMENTS AND MODIFICATIONS, FOR THE APPROVAL OF THE SUPERVISION ENTITY AT THE SLWE.
- 5- SEQUENCE OF OPERATION SCENARIOS SHALL BE PROPOSED BY THE CONTRACTOR FOR THE APPROVAL OF THE SUPERVISION ENTITY AT THE SLWE.
- 6- THE CONTRACTOR HAS TO PROVIDE COMPLETE CALCULATION NOTES FOR COMPONENTS SIZING.
- 7- THE CONTRACTOR SHALL SUBMIT COMPLETE SIMULATION REPORT SHOWING THE SYSTEM'S POWER GENERATION FORECAST AROUND THE YEAR FOR 12 MONTHS FOR THE APPROVAL OF THE SUPERVISION ENTITY AT THE SLWE.
- 8- ALL METALLIC STRUCTURES SHALL BE EARTHED LOCALLY.
- 9- CABLE JOINTING AND SPLICING SHALL NOT BE USED UNLESS INSTRUCTED BY THE ENGINEER.
- 10- ANY DIVERGENCE FROM THE DESIGN SHALL BE JUSTIFIED.
- 11- DATA SHEETS FOR ALL EQUIPMENT SHALL BE PROVIDED BY THE CONTRACTOR FOR THE APPROVAL OF THE SUPERVISION ENTITY AT THE SLWE PRIOR TO ORDERING THE EQUIPMENT. CHARACTERISTICS OF THE PROPOSED EQUIPMENT MAY DIFFER FROM THOSE PROVIDED IN THE DRAWINGS.
- 12- TECHNICAL MATERIAL SUBMITTALS SHALL BE PROVIDED FOR THE APPROVAL OF THE SUPERVISION ENTITY AT THE SLWE.

LEGEND:

REV.	DATE	DRAWN	DESIGNED	CHECKED
0	08/2022	H.KAISSI	H.KAISSI	A.KHALIL

CLIENT:
REPUBLIC OF LEBANON
 MINISTRY OF ENERGY AND WATER
 SOUTH LEBANON WATER AND WASTE
 WATER ESTABLISHMENT (SLWWE)

PROJECT NAME:
 NOMAIRYIEH WELL#3 SOLAR POWERED
 PUMPING STATION
 مؤسسة مياه لبنان الجنوبي

DRAWING TITLE:
 148 KWp SOLAR FARM
 SCHEDULE OF EQUIPMENT

DRAWING NUMBER:

NOM-EL	PV	1	-
REFERENCE	DIVISION	SHEET NO.	REV.

SCALE : N.T.S **DATE :** AUGUST 2022
DISCIPLINE : SOLAR **PHASE :** DESIGN

ARCH
 CIVIL
 MECH
 ELEC
 مبرمج: الدكتور والمهندسين



NOTE:

- 1- ELECTRICAL LAYOUT DRAWINGS ARE INDICATIVE.
- 2- THE PROPOSED DRAWINGS DO NOT SHOW ALL OF THE SYSTEM'S COMPONENTS AND THEY SHALL BE USED AS DESIGN GUIDELINES.
- 3- DO NOT SCALE FROM THESE DRAWINGS.
- 4- THE CONTRACTOR SHALL SUBMIT COMPLETE SHOP DRAWINGS, INCLUDING ANY AMENDMENTS AND MODIFICATIONS, FOR THE APPROVAL OF THE SUPERVISION ENTITY AT THE SLWE.
- 5- SEQUENCE OF OPERATION SCENARIOS SHALL BE PROPOSED BY THE CONTRACTOR FOR THE APPROVAL OF THE SUPERVISION ENTITY AT THE SLWE.
- 6- THE CONTRACTOR HAS TO PROVIDE COMPLETE CALCULATION NOTES FOR COMPONENTS SIZING.
- 7- THE CONTRACTOR SHALL SUBMIT COMPLETE SIMULATION REPORT SHOWING THE SYSTEM'S POWER GENERATION FORECAST AROUND THE YEAR FOR 12 MONTHS FOR THE APPROVAL OF THE SUPERVISION ENTITY AT THE SLWE.
- 8- ALL METALLIC STRUCTURES SHALL BE EARTHED LOCALLY.
- 9- CABLE JOINTING AND SPLICING SHALL NOT BE USED UNLESS INSTRUCTED BY THE ENGINEER.
- 10- ANY DIVERGENCE FROM THE DESIGN SHALL BE JUSTIFIED.
- 11- DATA SHEETS FOR ALL EQUIPMENT SHALL BE PROVIDED BY THE CONTRACTOR FOR THE APPROVAL OF THE SUPERVISION ENTITY AT THE SLWE PRIOR TO ORDERING THE EQUIPMENT. CHARACTERISTICS OF THE PROPOSED EQUIPMENT MAY DIFFER FROM THOSE PROVIDED IN THE DRAWINGS.
- 12- TECHNICAL MATERIAL SUBMITTALS SHALL BE PROVIDED FOR THE APPROVAL OF THE SUPERVISION ENTITY AT THE SLWE.

LEGEND:

REV.	DATE	DRAWN	DESIGNED	CHECKED
0	08/2022	H.KAISSI	H.KAISSI	A.KHALIL

CLIENT:
REPUBLIC OF LEBANON
 MINISTRY OF ENERGY AND WATER
 SOUTH LEBANON WATER AND WASTE
 WATER ESTABLISHMENT (SLWWE)

PROJECT NAME:
**NOMAIRYIEH WELL#3 SOLAR POWERED
 PUMPING STATION**
 مؤسسة مياه لبنان الجنوبي

DRAWING TITLE:
**148 KwP SOLAR FARM
 LAND SURVEY LAYOUT**

DRAWING NUMBER:

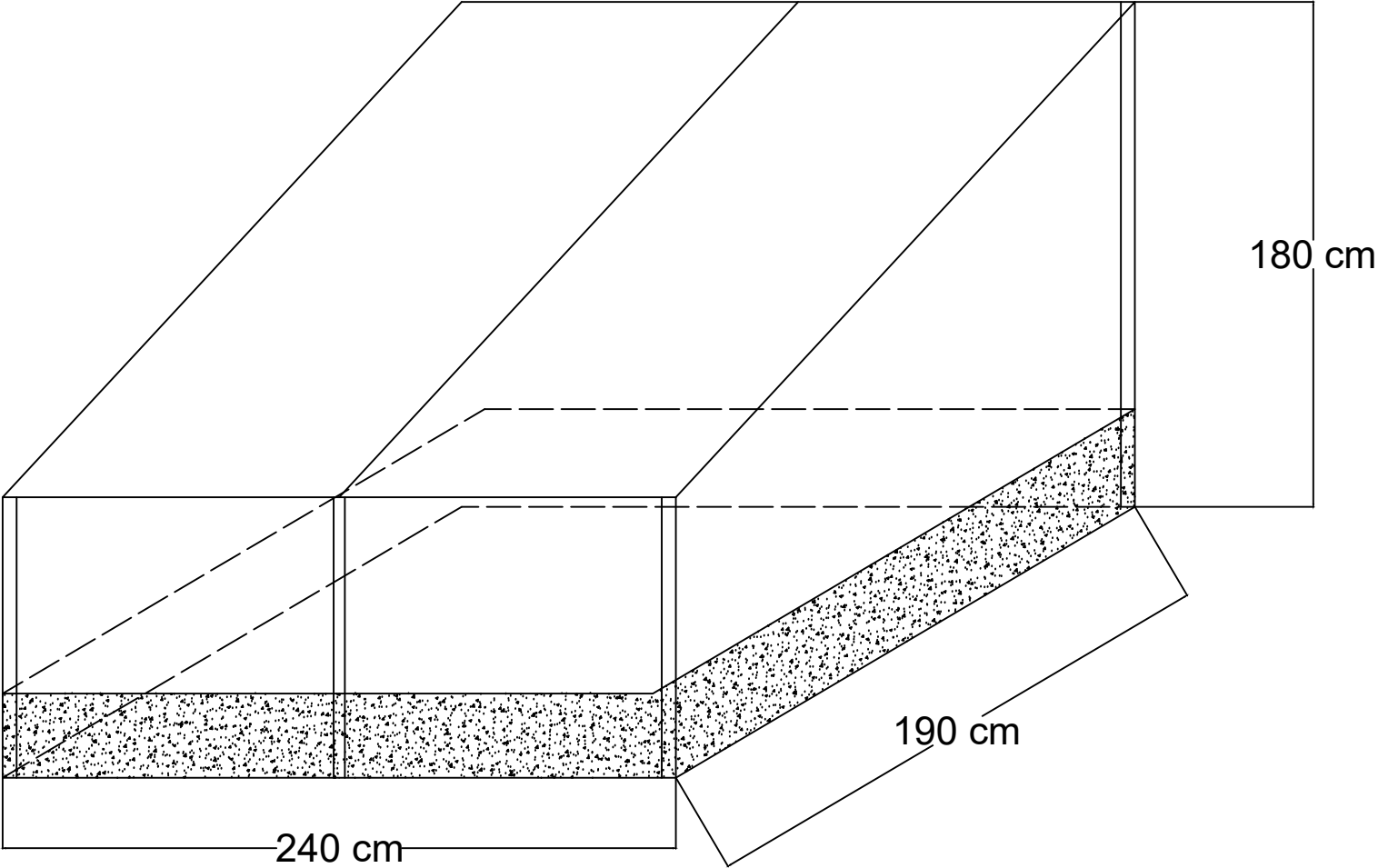
NOM-EL	-	PV	-	4	-
REFERENCE		DIVISION		SHEET NO.	REV.

SCALE : N.T.S **DATE :** AUGUST 2022
DISCIPLINE : SOLAR **PHASE :** DESIGN

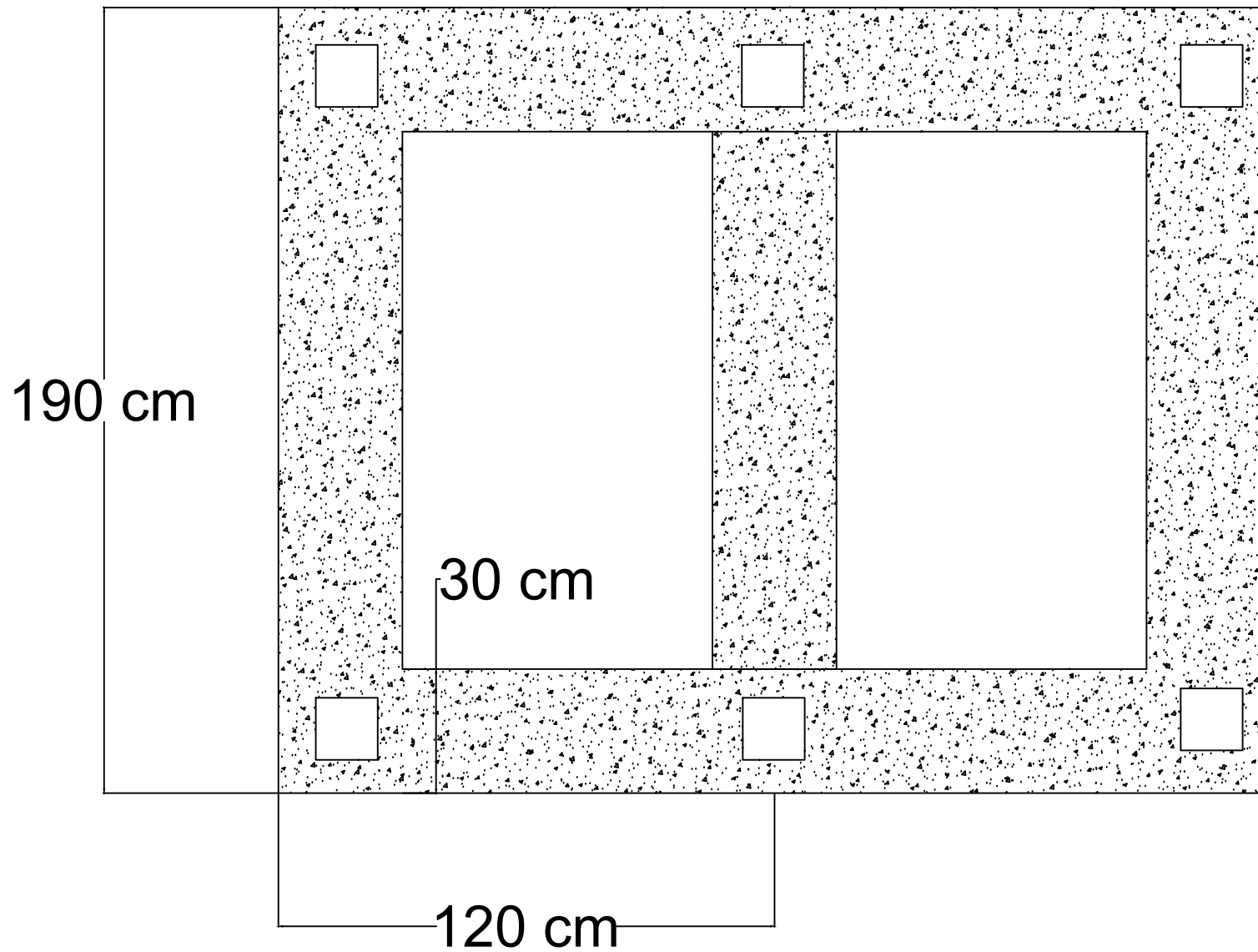
ARCH	CIVIL	MECH	ELECT
			X

مراجعة: الدكتور والهندسة

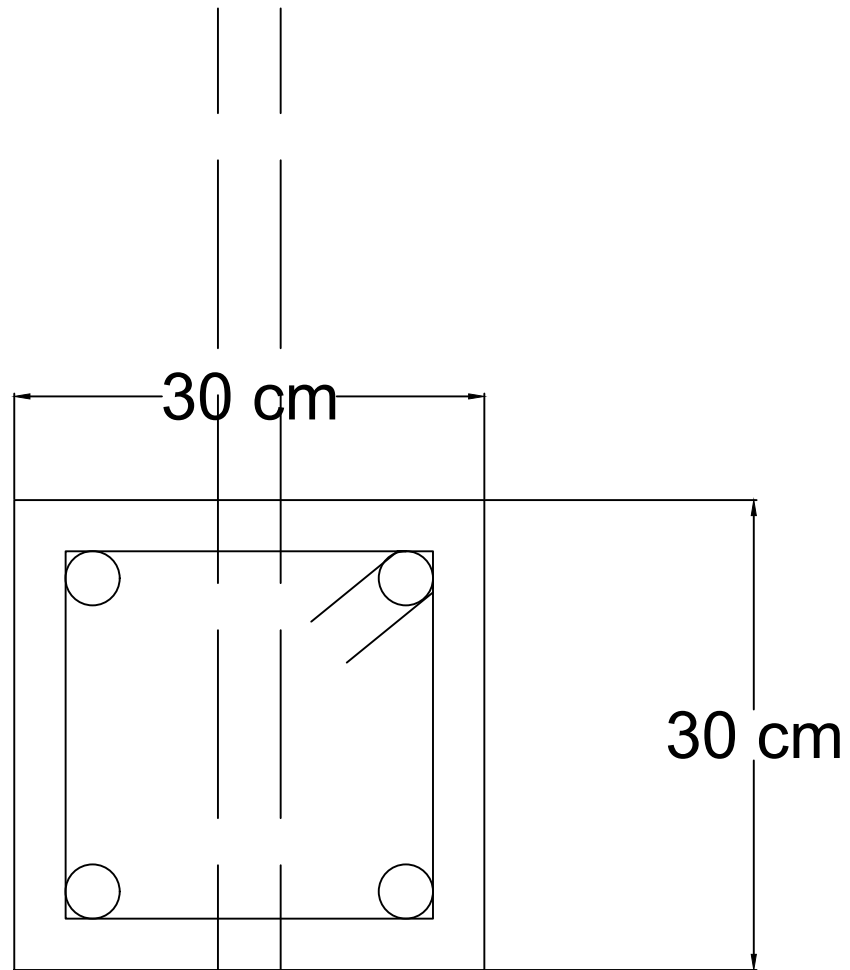
Concrete foundations



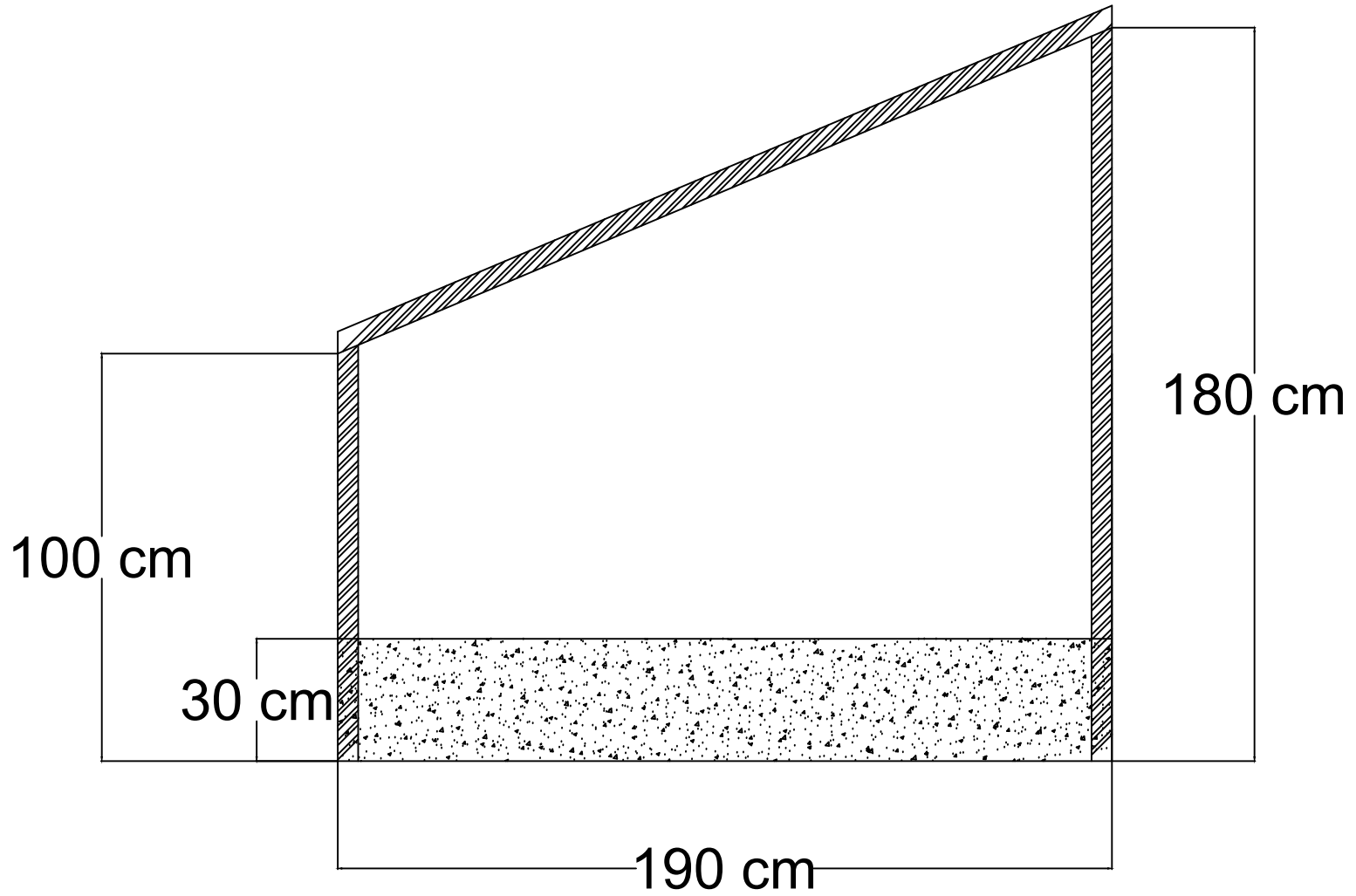
Concrete foundations



Concrete foundation - section



Section



Steel structure

