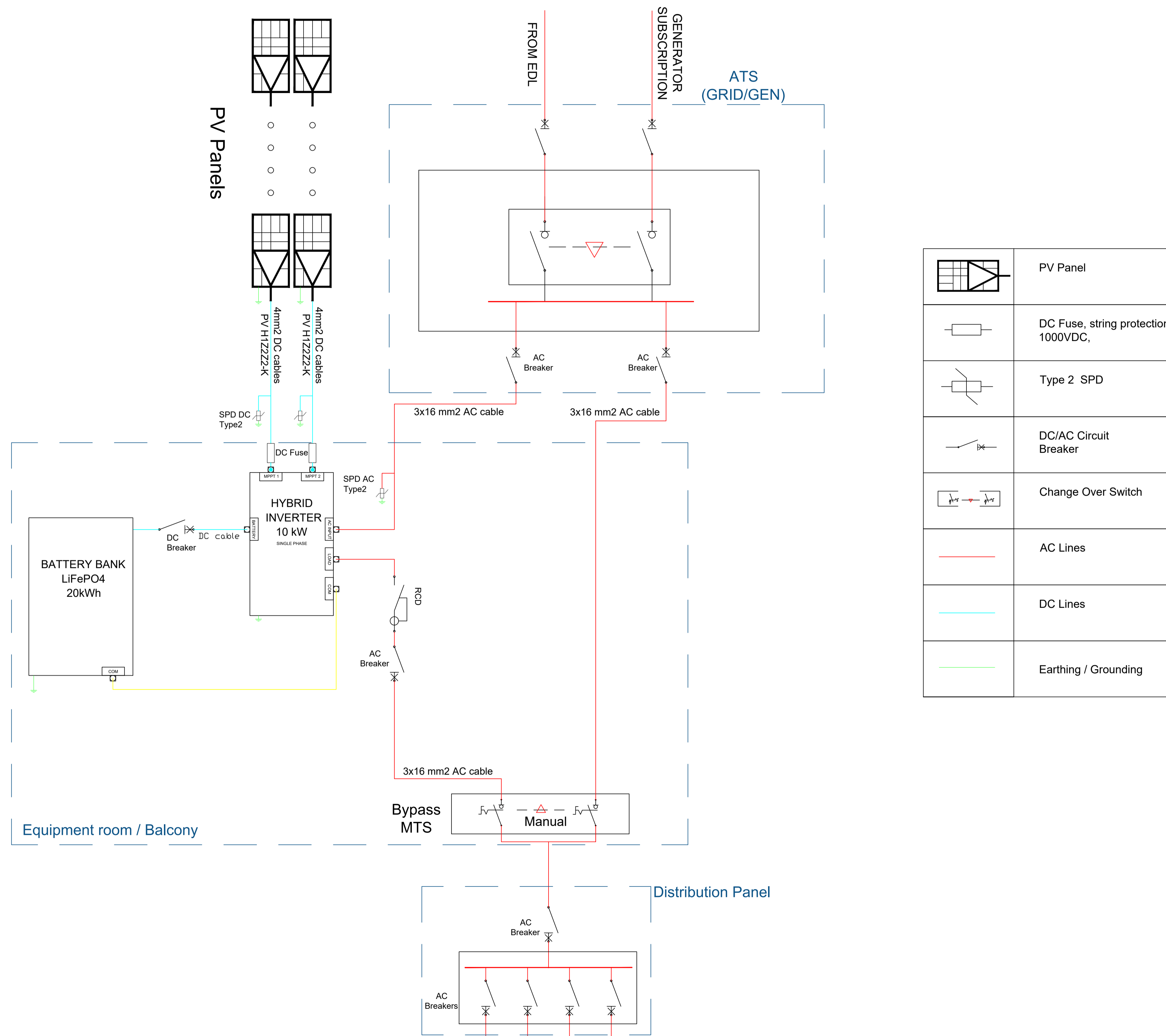


**TOTAL PV GENERATOR
DC CAPACITY:
11 kWp**



	PV Panel
	DC Fuse, string protection 1000VDC,
	Type 2 SPD
	DC/AC Circuit Breaker
	Change Over Switch
	AC Lines
	DC Lines
	Earthing / Grounding

NOTES:

- Contractor to ensure earth system value is below 5 ohms - Earthing system location to be coordinated on site - Main earth bar to be located near the inverter.
- All drawings to be read in conjunction with specification, BOQ and tender documents.
- Contractor to submit detailed shop drawings for all system components including metal structure, equipment room, wind load calculation and all necessary documentation to the satisfaction of the engineer.
- Contractor to submit PV performance simulation using the approved material.
- PV layout is for information purposes only. Contractor to develop their own detailed drawings based on their material submittal and site conditions.
- Layout including orientation is for information purposes only. Contractor to develop their own calculation based on the used material and further shading analysis.
- The inverter/batteries room is part of the scope including all necessary civil works. final dimensions to be submitted for approval at construction phase.
- Solar water heater exact location to be coordinated on site. Solar water heaters exact number is dependant on required capacity as per BOQ.
- All necessary works for the installation of the solar systems are within the scope of the contract. This includes cleaning, civil works, electrical works, relocation works for existing equipment, AC compressors, extension of piping, copper tubing, insulation, coring and resealing of water infiltration hazar points caused by the contractor intervention.



APPROVED BY:
DATE:

REV	DESCRIPTION OF REVISION	DRAWN	DATE

DRAWN BY: E.V.	CHECKED BY: G.D.	APPROVED BY: R.M.
DATE: 13.08.2024	DATE:	DATE:

**CIVIL DEFENSE CENTER
Sed El Baouchrieh**

CLIENT:
Funded By:



DWG.TITLE:
SINGLE LINE DIAGRAM

DATE : 13.08.2024	SCALE : NOT TO SCALE	REVISION: 00
PROJECT CODE: PCPM-01	DWG NO. PCPM-SOL-SEBDC-01	