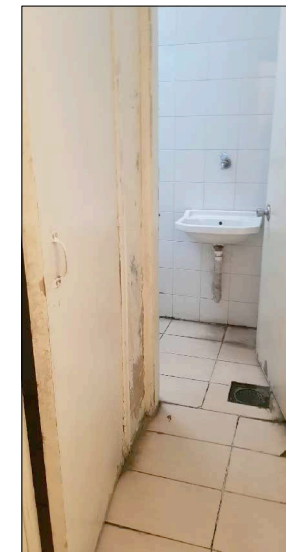
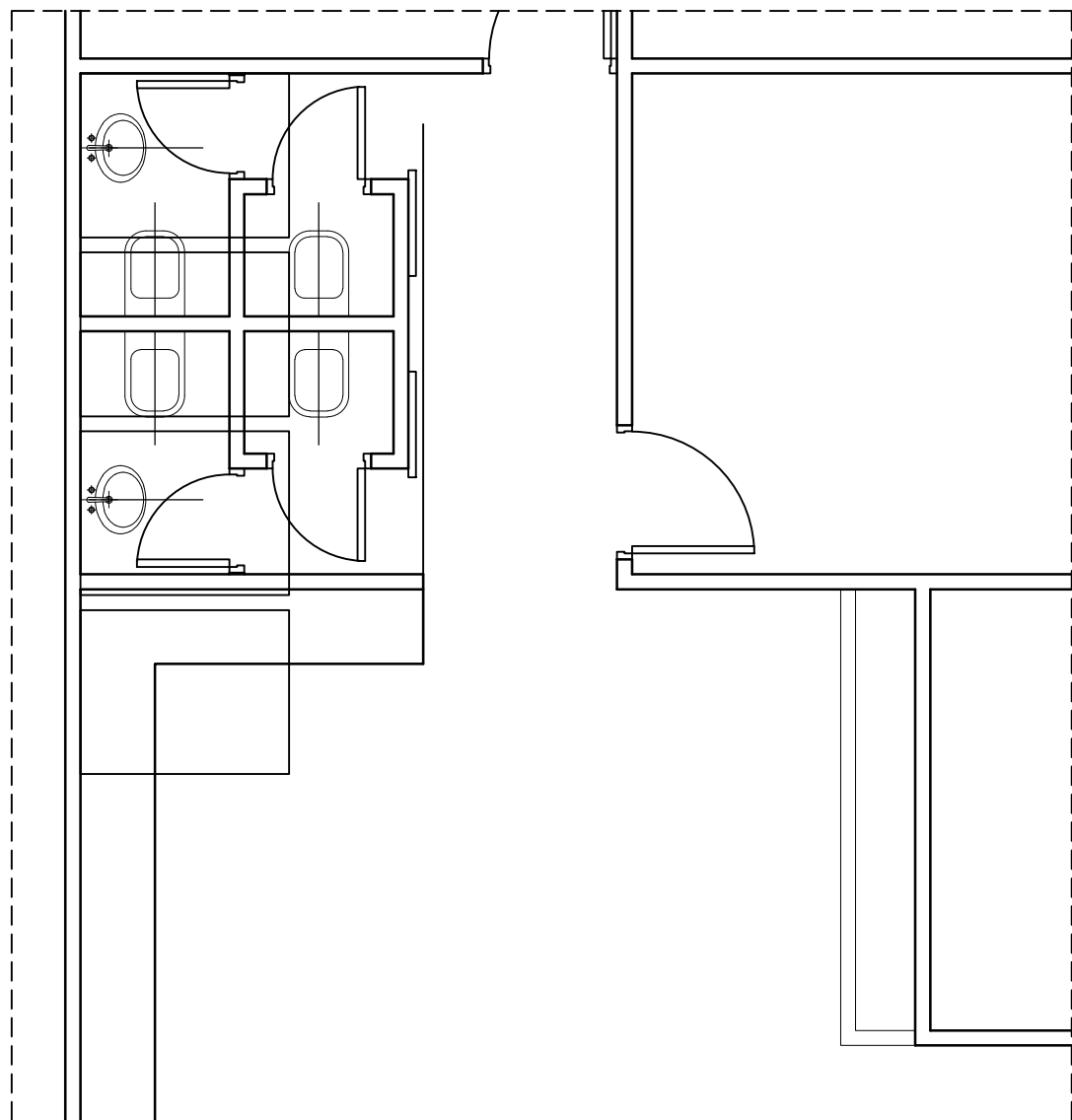
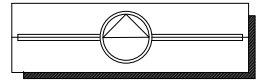


NOTES



GROUND FLOOR
EXISTING



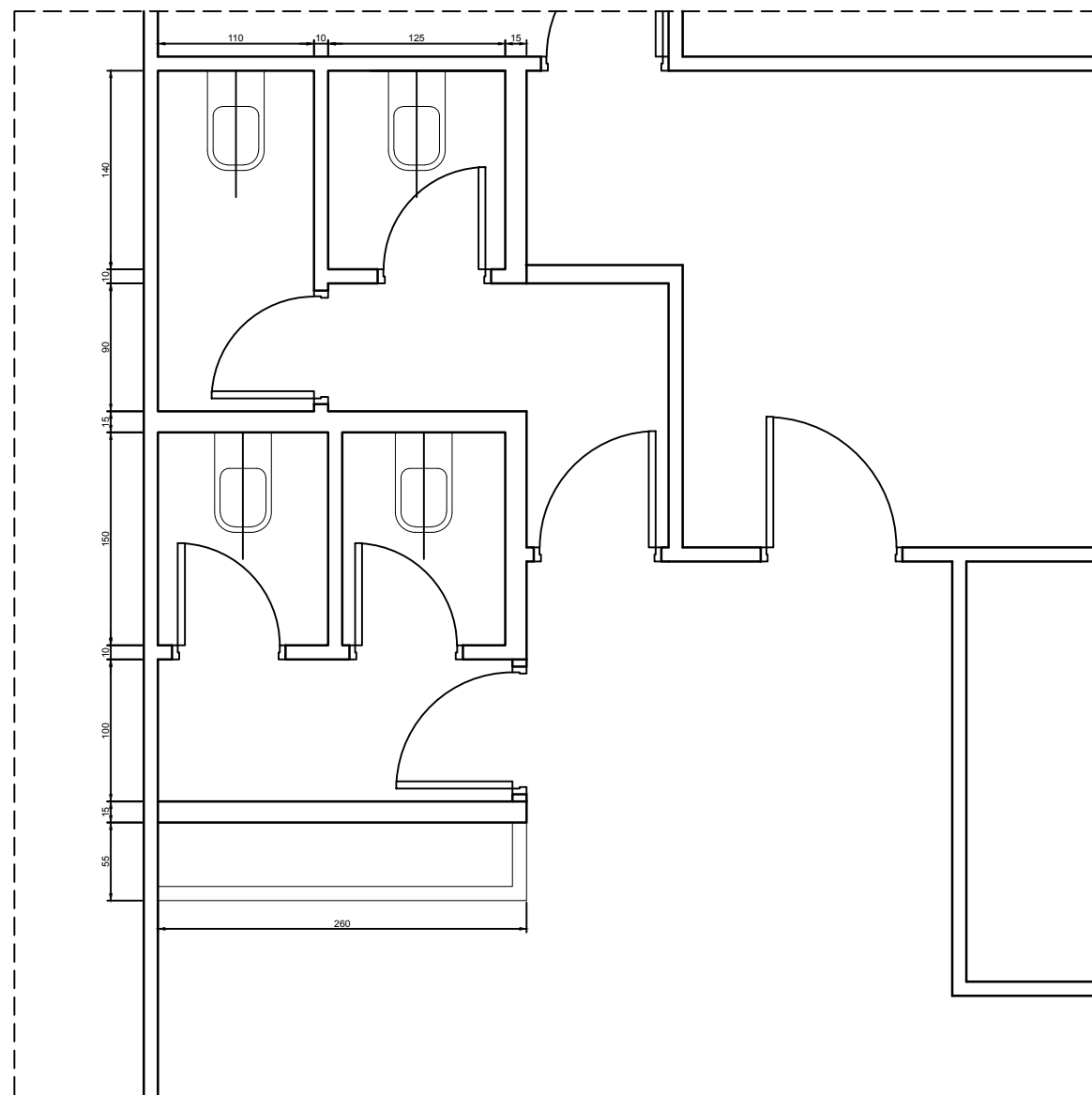
AI MOUATEN SCHOOL
BEITUT-LEBANON

JOSEPH ABDALLAH ARCHITECT
SPECIALIZES IN RESTORATION & CONSERVATION
OF HISTORIC MONUMENTS AND SITES
www.josephabdallah.com.lb 961-3-767998

WORLD VISION LEBANON
PROJECT:
AI MOUATEN SCHOOL
SUBJECT:
WASH FACILITIES
PHASE:
DESIGN DRAWINGS
DATE: MAY 2018

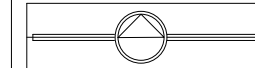
EXISTING PLAN
SCALE: 1/50

A01



GROUND FLOOR

NOTES



AI MOUATEN SCHOOL
BEITUT-LEBANON

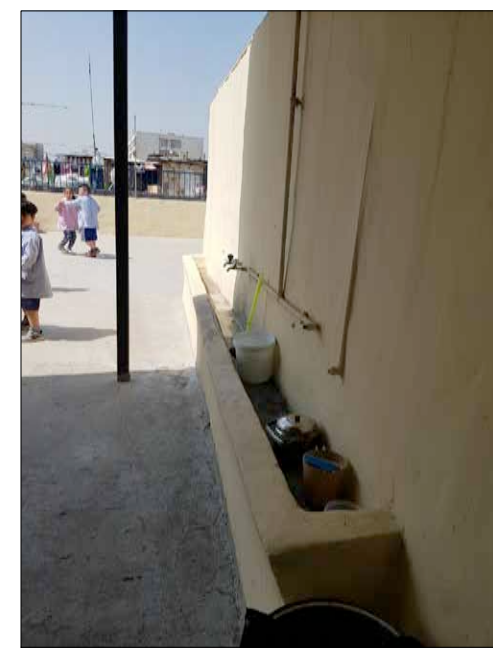
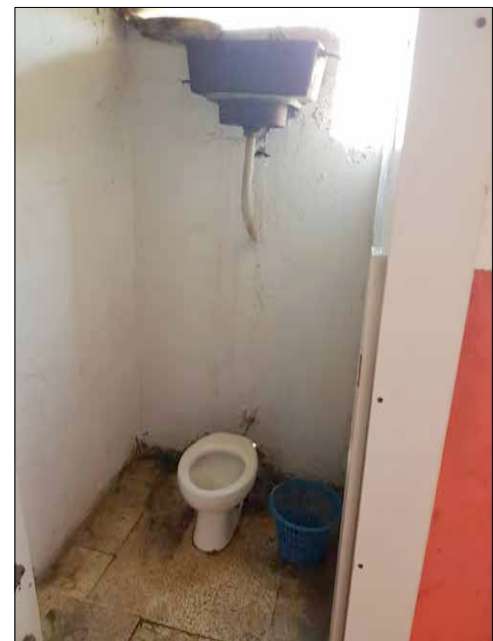
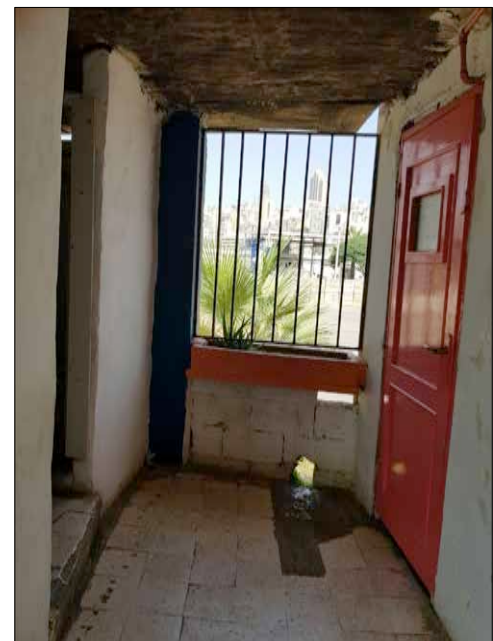
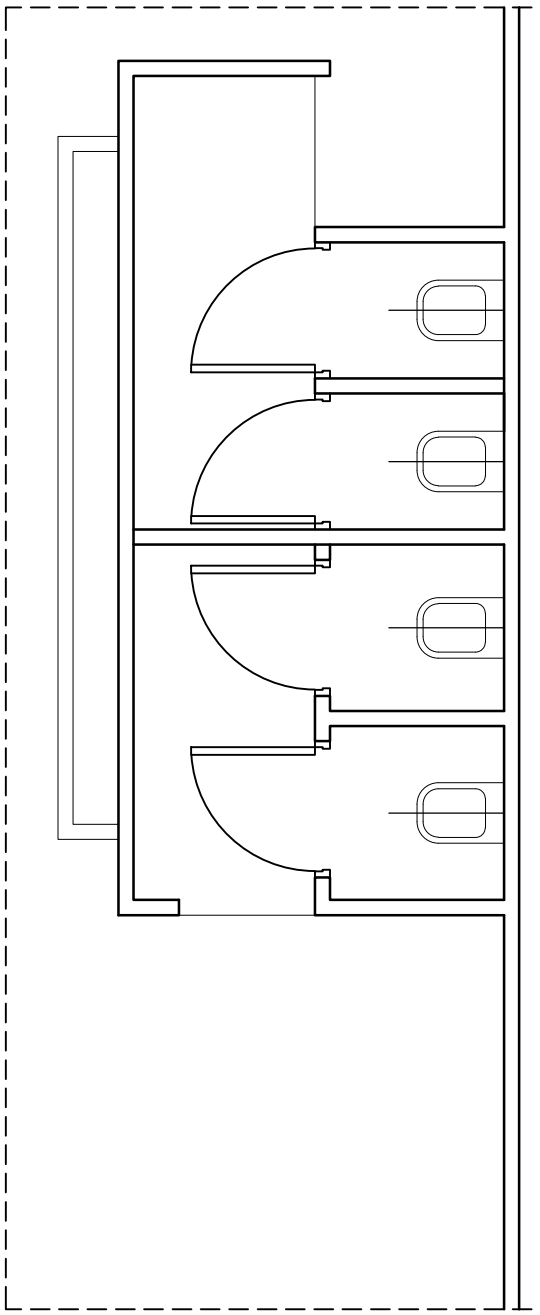
JOSEPH ABDALLAH ARCHITECT
SPECIALIZES IN RESTORATION & CONSERVATION
OF HISTORIC MONUMENTS AND SITES
www.josephabdallah.com.lb 961-3-767998

WORLD VISION LEBANON
PROJECT:
AI MOUATEN SCHOOL
ELEMENT:
WASH FACILITIES
PHASE:
DESIGN DRAWINGS
DATE: JUNE 2018

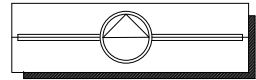
PROPOSED PLAN
SCALE: 1/50

A02

NOTES



KINDER' WCs
ROOF TOP FLOOR



AI SHAREQ SCHOOL
BEITUT-LEBANON

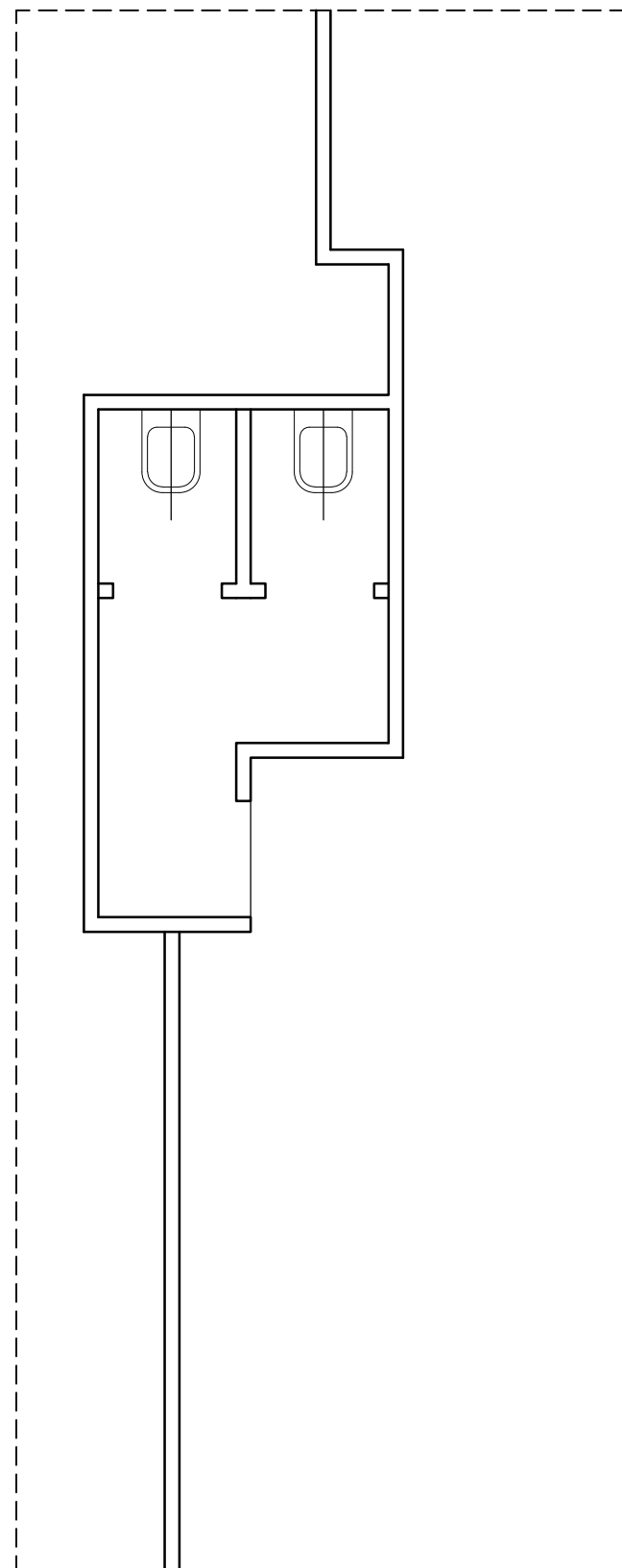
JOSEPH ABDALLAH ARCHITECT
SPECIALIZES IN RESTORATION & CONSERVATION
OF HISTORIC MONUMENTS AND SITES
www.josephabdallah.com.lb 961-3-767998

WORLD VISION LEBANON
PROJECT:
AI SHAREQ SCHOOL
ELEMENT:
WASH FACILITIES
PHASE:
DESIGN DRAWINGS
DATE: MAY 2018

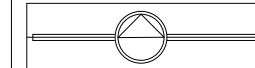
EXISTING PLAN
SCALE: 1/50

A01

NOTES



GIRLS' WCs
GROUND FLOOR



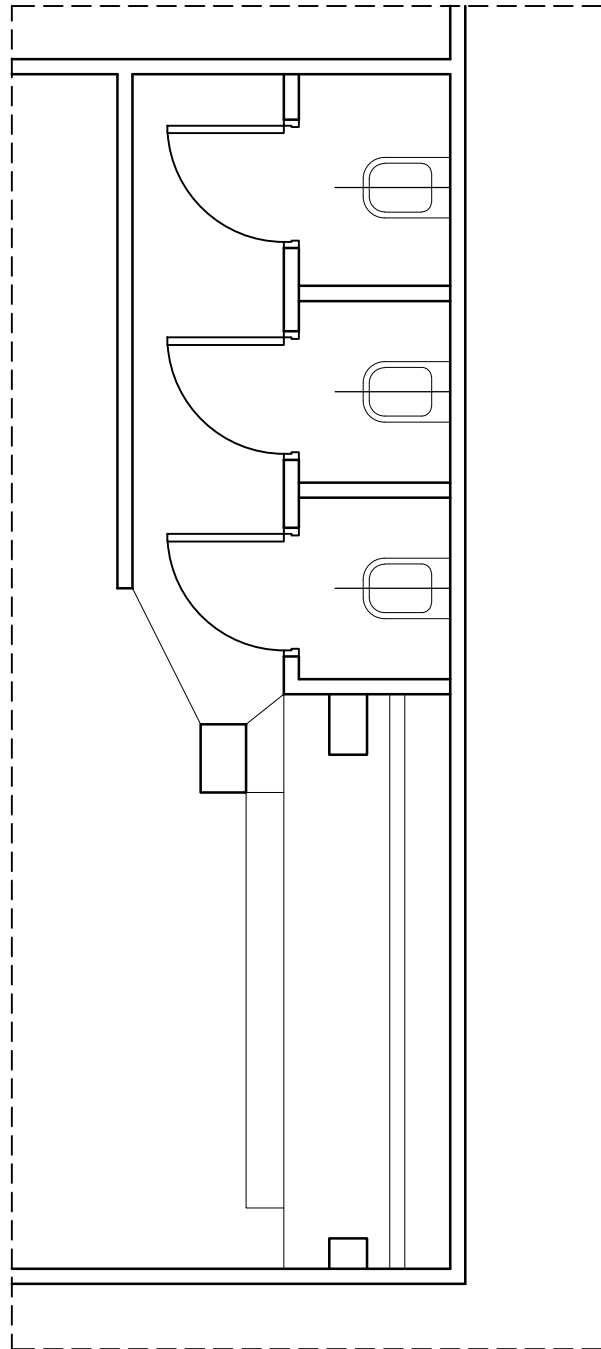
AI SHAREQ SCHOOL
BEITUT-LEBANON

JOSEPH ABDALLAH ARCHITECT
SPECIALIZES IN RESTORATION & CONSERVATION
OF HISTORIC MONUMENTS AND SITES
www.josephabdallah.com.lb 961-3-767998

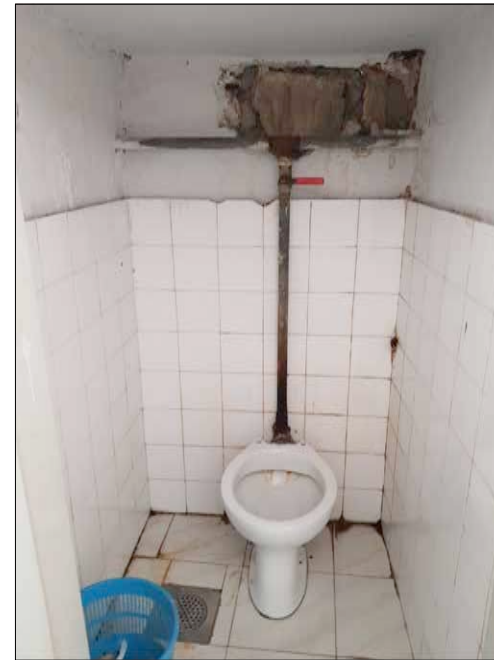
WORLD VISION LEBANON
PROJECT:
AI SHAREQ SCHOOL
ELEMENT:
WASH FACILITIES
PHASE:
DESIGN DRAWINGS
DATE: MAY 2018

EXISTING PLAN
SCALE: 1/50

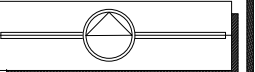
A03



BOYS' WCs
GROUND FLOOR



NOTES



AI SHAREQ SCHOOL
BEITUT-LEBANON

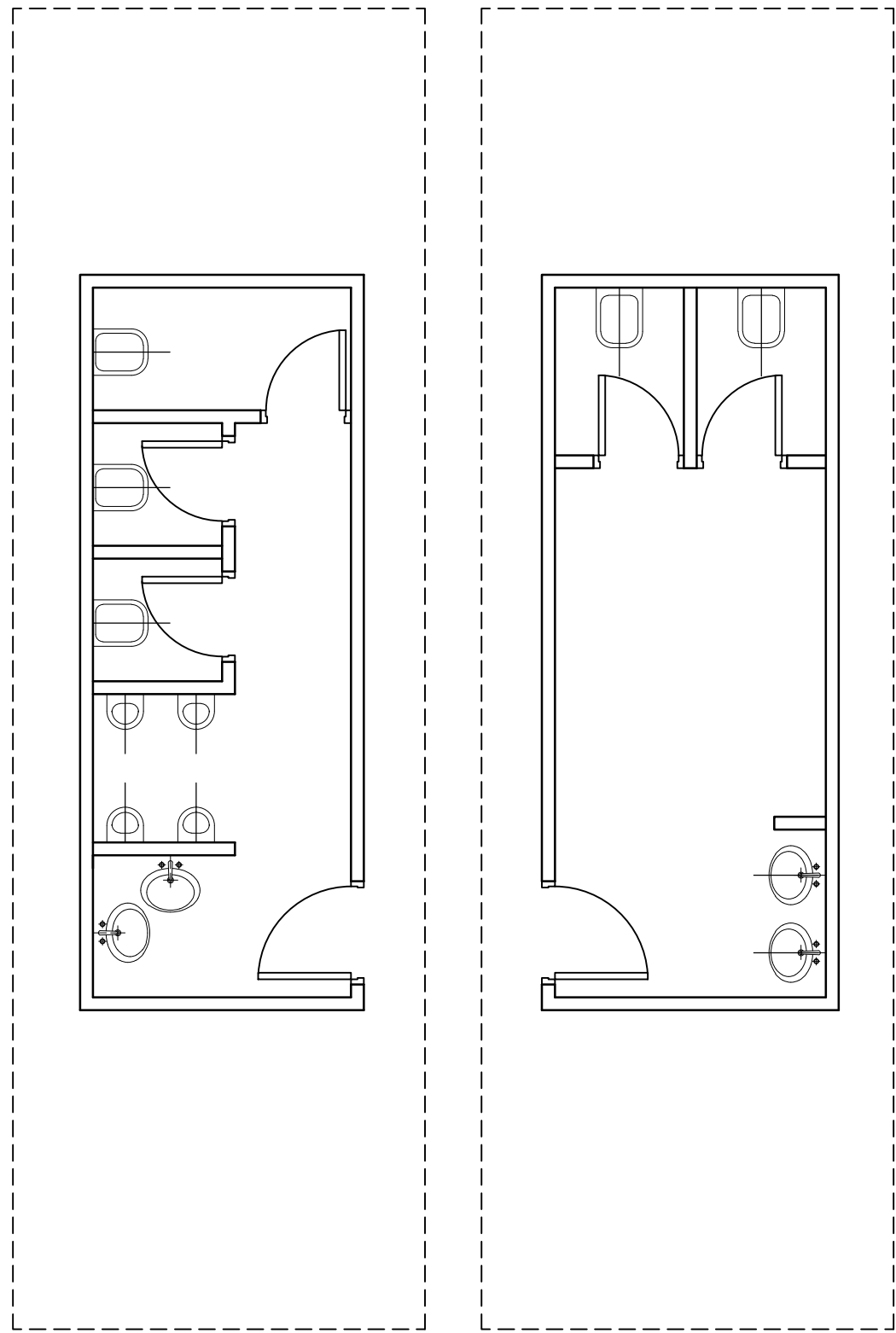
JOSEPH ABDALLAH ARCHITECT
SPECIALIZES IN RESTORATION & CONSERVATION OF HISTORIC MONUMENTS AND SITES
www.josephabdallah.com.lb 961-3-767998

WORLD VISION LEBANON
PROJECT:
AI SHAREQ SCHOOL
SUBJECT:
WASH FACILITIES
PHASE:
DESIGN DRAWINGS
DATE: MAY 2018

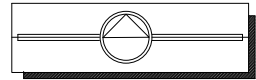
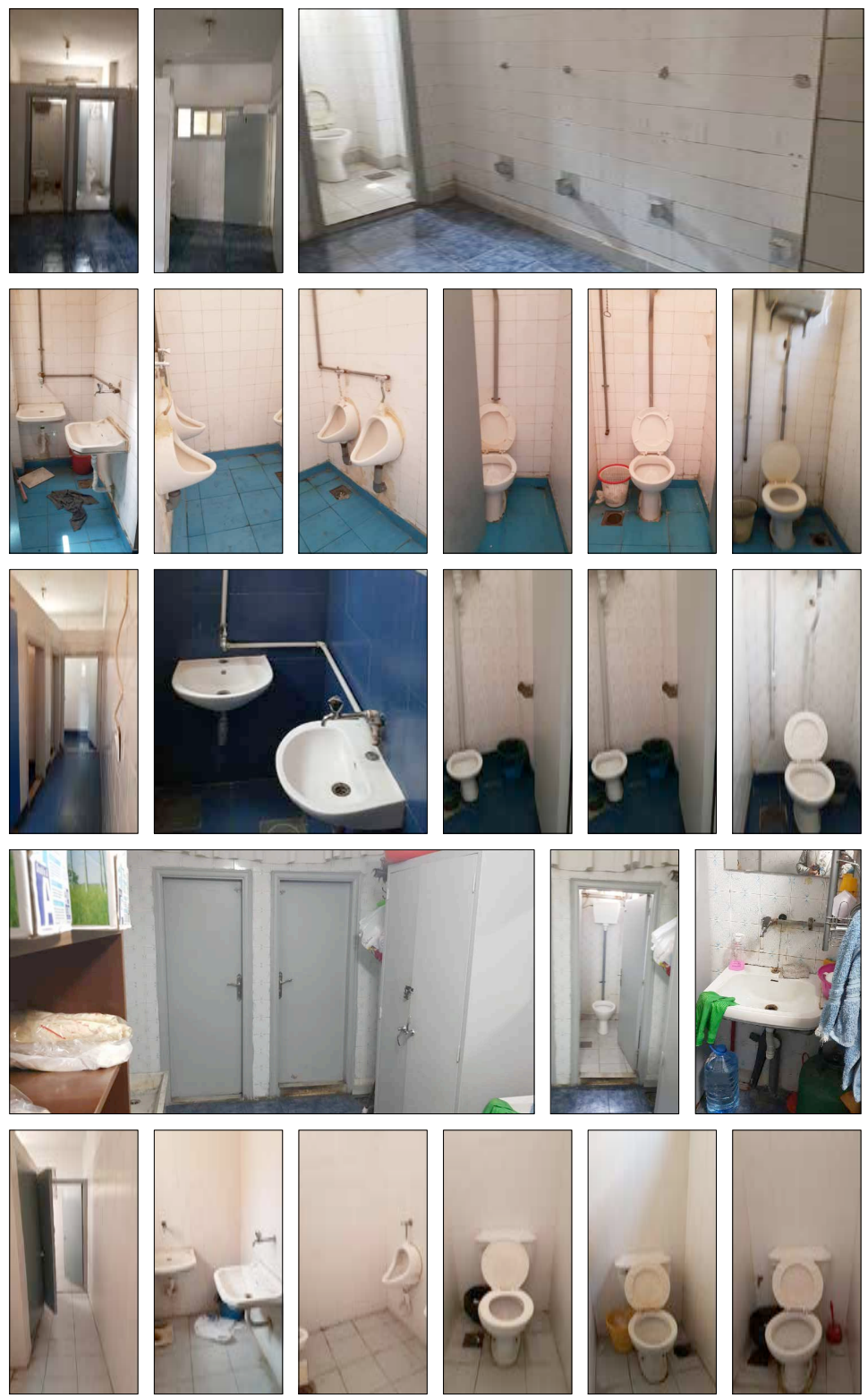
EXISTING PLAN
SCALE: 1/50

A02

NOTES



1 ST, 2ND, 3RD FLOOR
EXISTING



AI TARAKEY SCHOOL
BEITUT-LEBANON

JOSEPH ABDALLAH ARCHITECT
 SERVICES PROVIDED IN STRUCTURE DESIGN & CONSTRUCTION OF
 HISTORIC MONUMENTS AND SITES
 www.josephabdallah.com.lb 961-3-767998

WORLD VISION LEBANON
 PROJECT:
 AI TARAKEY SCHOOL
 ELEMENT:
 WASH FACILITIES
 PHASE:
 DESIGN DRAWINGS
 DATE: MAY 2018

EXISTING PLAN
SCALE: 1/50

A01