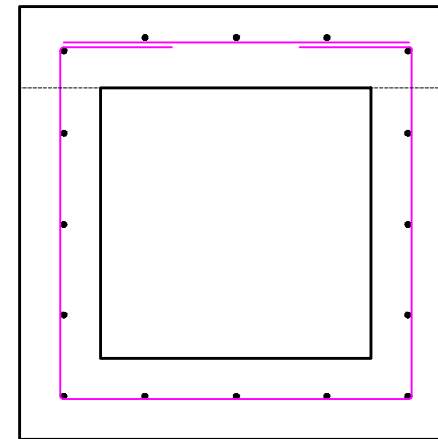


Polyethylene sheet  
for concrete protection

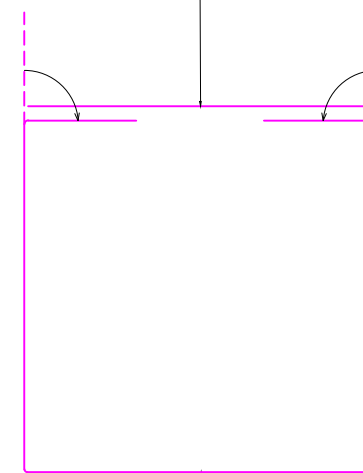
COMPACTED GRAVEL  
LAYER IF NEEDED

### REINFORCEMENT DETAILS



Steel Bars Shape

Steel length= 65 cm



Steel length= 235 cm



Republic of Lebanon

North Governorate

Daniyeh Region

Note:

Reinforced concrete:

Concrete for all structure (350kg/m<sup>3</sup>)

Reinforcement:

Deformed high strength steel bars

Yield stress:  $F_y=420\text{N/mm}^2$

All Steel Bars :  $\text{Ø}10\text{mm @}15\text{cm}$

Drawing Title :

Concrete Canal Culvert Box Section and  
Reinforcement Details for Daniyeh Project

1 of 1

Section 2

Lebanese Relief Council



**LEB  
RELIEF**