

| MOUNTING HEIGHT OF DEVICES AND CABINETS                                   |  |
|---|--|
| -GENERAL RECEPTACLES WALL MOUNTED = 300mm AFL                             |  |
| -WHERE BENCHES ARE PROVIDED SOCKET OUTLET WALL MOUNTED = 800mm AFL        |  |
| -WHERE BENCHES ARE PROVIDED TELEPHONE & DATA WALL MOUNTED = 300mm AFL     |  |
| -TELEPHONE & DATA WALL MOUNTED = 300mm AFL                                |  |
| -GENERAL LIGHTING SWITCHES = 1000mm AFL                                   |  |
| -FIRE ALARM MANUAL CALL STATION = 1000mm AFL                              |  |
| -FIRE ALARM BELL = 2000mm AFL   |  |
| -WALL MOUNTED ELECTRICAL PANEL BOARD = 1400mm FROM BOTTOM TO FFL          |  |
| -LOW CURRENT WALL MOUNTED CABINETS AND PANELS = 1400mm FROM BOTTOM TO FFL |  |

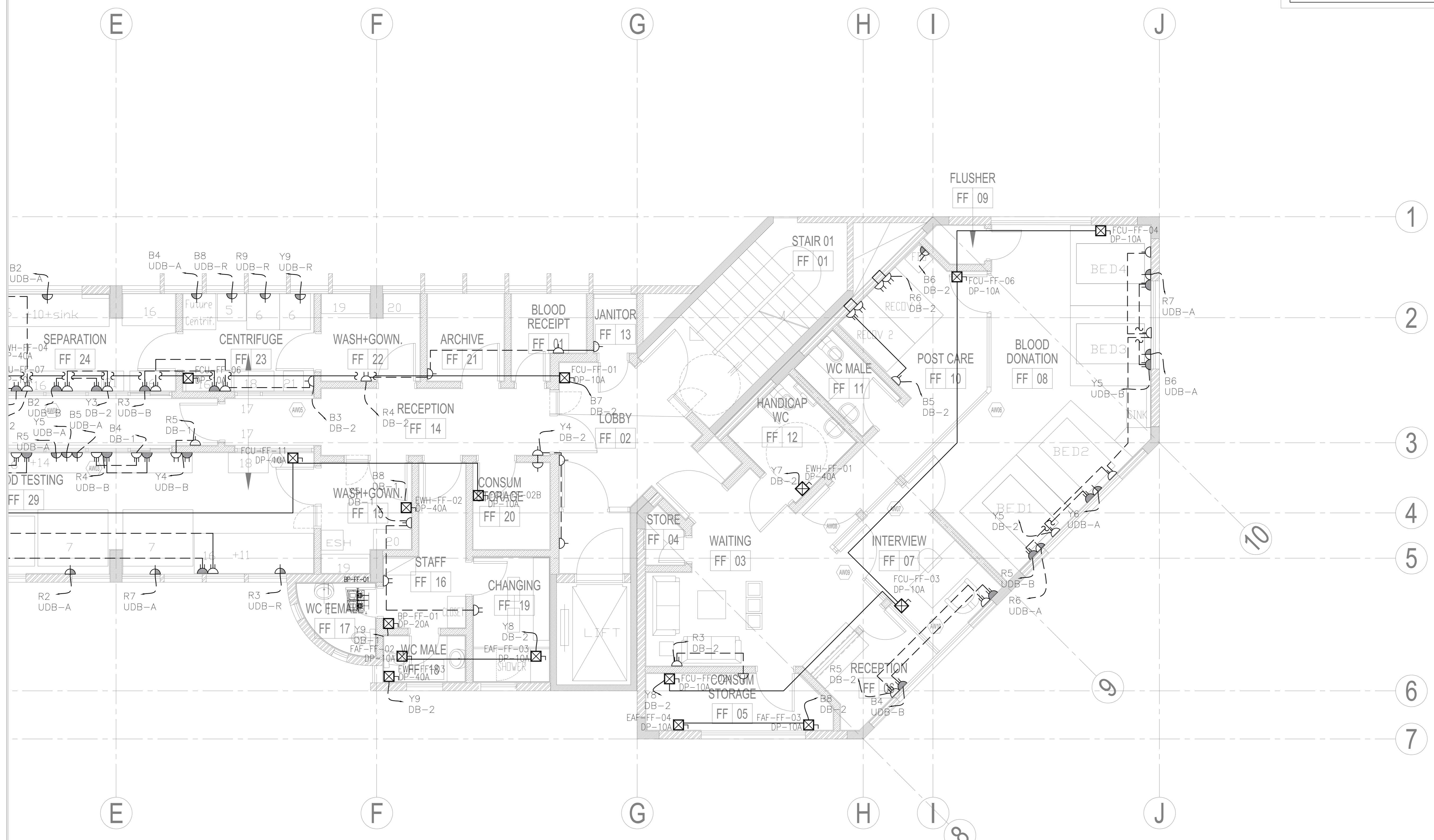
**KEYPLAN:**

**NOTES:**

- 1- GENERATORS & ITS SYNCHRO PANELS, & FUEL TANKS AND UPS & ITS ATS SYSTEMS ARE INSTALLED BY SEPARATE AWARDED SUPPLIERS. CONTRACTOR SHALL COORDINATE AND PROVIDE THESE SUPPLIERS THE NECESSARY CABLING LENGTHS & SIZES AS SPECIFIED IN THIS TENDER.
- 2- IT IS THE CONTRACTOR RESPONSIBILITY TO SUBMIT LOAD CALCULATIONS AND VERIFY IT WITH THE UPS LOADS AND COORDINATE WITH THE SEPARATE AWARDED SUPPLIER THE INSTALLATION OF UPS SYSTEMS IN THE NEW ELECTRICAL ROOM ON ROOF TO THE SATISFACTION AND APPROVAL OF THE ENGINEER.
- 3- EXACT LOCATION OF ELECTRICAL COMPONENTS (SOCKET, SWITCHES,...) SHALL BE COORDINATED ON SITE.

**LEGEND:**

|  |   |
|--|---|
|  | WALL MOUNTED SIMPLEX SOCKET OUTLET  |
|  | WALL MOUNTED DUPLEX SOCKET OUTLET   |
|  | FLOOR MOUNTED DUPLEX SOCKET OUTLET  |
|  | 20A WALL MOUNTED POWER SOCKET OUTLET  |
|  | WALL MOUNTED SIMPLEX UPS SOCKET OUTLET  |
|  | WALL MOUNTED DUPLEX UPS SOCKET OUTLET   |
|  | FLOOR MOUNTED DUPLEX UPS SOCKET OUTLET  |
|  | SURFACE MOUNTED DISTRIBUTION BOARD  |
|  | SURFACE MOUNTED UPS DISTRIBUTION BOARD  |
|  | DISCONNECT SWITCH, IP54, ROBUST THERMOPLASTIC ENCLOSURE, RATED IN AC23, RATING AND POLES NUMBERS TO BE AS MENTIONED ON THE DRAWINGS   |
|  | WATERPROOF DISCONNECT SWITCH, IP64, ALUMINUM ALLOY ENCLOSURE, RATED IN AC23, RATING AND POLES NUMBERS TO BE AS MENTIONED ON THE DRAWINGS  |
|  | WATERPROOF DISCONNECT SWITCH, IP64, ALUMINUM ALLOY ENCLOSURE, RATED IN AC23, RATING AND POLES NUMBERS TO BE AS MENTIONED ON THE DRAWINGS. THE DISCONNECT SHALL BE FIXED ON GALVANIZED METAL STAND |
|  | ELECTRICAL OUTLET   |



**PROJECT TITLE**  
LRC BTS ANTELIAS  
ANTELIAS - LEBANON

**OWNER**  
 LEBANESE RED CROSS

**LRC CONSULTANT**  
PROF. SAID BITAR  
Architecte Urbaniste

**LEAD DESIGNER**  
 INTERNATIONAL CONSULTING BUREAU  
International Consulting Bureau s.a.l  
Aresso Tower, 4th floor, Justinian st.  
Clémenceau, Beirut - Lebanon  
Tel : 01 347 597 Fax: 01 736 233

**DRAWING TITLE**  
POWER  
ZONE 3  
FIRST FLOOR PLAN

**DRAWING NUMBER**  
BTS AN - E - 230 - F1 - 00

**SCALE** : 1/50  
**DATE** : October 2021  
**DISCIPLINE** : ELECTRICAL  
**PHASE** : TENDER