

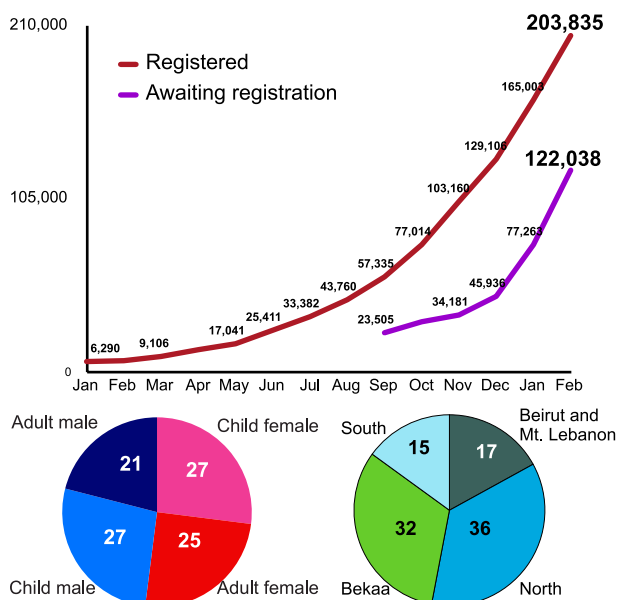


## DRC LEBANON BACKGROUND

The Danish Refugee Council (DRC) is a humanitarian, non-governmental, non-profit organization working in Lebanon since 2004. In May 2011, DRC responded to a call from UNHCR, when the Syrian crisis started and the first Syrian refugees came into Lebanon. DRC believes that no refugee must be in want of help to find protection and durable solutions and hence the emergency response aims to provide immediate relief and protection to displaced refugees, including their vulnerable hosts, in an impartial, inclusive and neutral manner, adhering to the Code of Conduct of the Red Cross and Red Crescent Societies.

DRC's emergency strategy focuses on three main geographical areas and four core sectors of intervention: provision of Food and Non-food Items (NFI), Shelter, Protection and Livelihoods and all programs are aimed to achieve this goal.

## PROFILE OF THE REFUGEE POPULATION

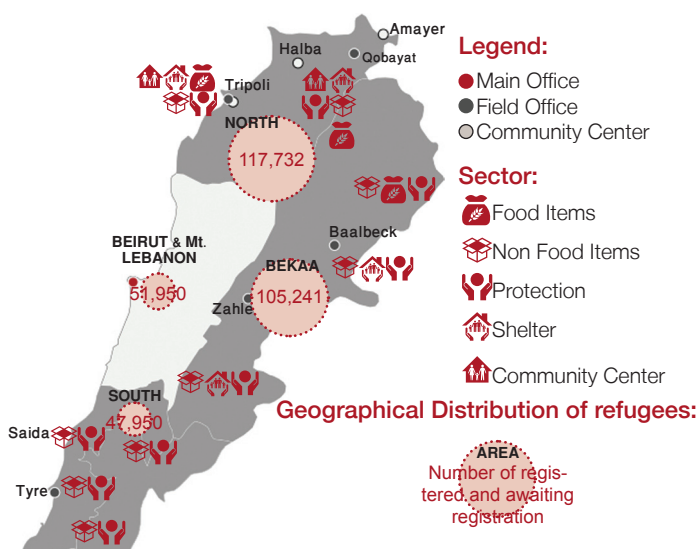


## AREAS OF OPERATION

**North Lebanon:** Tripoli, Akkar

**Bekaa:** North, Central and West Bekaa

**South of Lebanon:** Tyre, Nabatieh, Bint Jbeil and Marjayoun



February 2013 saw the highest number of Syrian refugees entering Lebanon yet. According to UNHCR, **325,873 Syrian refugees are receiving protection and assistance** from the Government of Lebanon, UN and NGO partners (Northern Lebanon: 117,732, Bekaa: 105,241 refugees, Beirut and Mount Lebanon: 51,950 and the South: 47,950). In addition, as yet unregistered newcomers arrive daily in dire need of emergency assistance. Lebanon continues to host the largest population affected by the Syrian crisis and DRC and its partners are delivering essential services to meet their needs.

## WHAT WE DO

### Winterization

Since October 2012, DRC has been distributing winterization items for Syrian refugees facing severe winter conditions across the country. **Over 20,300 households were assisted monthly through winterization activities between October and January.** Additional shelter support and heating stoves to cope with the cold conditions was also provided. This initiative was crucial as many people are currently residing in the coldest areas of Lebanon – the North and Bekaa Valley.

Key winterization items	Quantity Oct. 2012 - Jan. 2013
Blankets	76,667
Fuel vouchers	85,501
Clothes and clothing vouchers	33,154

### New Arrivals

Assessments by DRC show that 73% of refugees have to wait for approximately two months before they are registered with UNHCR. To meet the immediate needs of the new arrivals DRC has begun

assessments, protection support and targeted distributions such as winterization packages and food kits. **6,000 households have received 25,000 such items since DRC began working with the new arrivals in August 2012.**



## Distribution of Food and NFIs

DRC assisted more than **135,000 people** (27,098 registered families) through distribution of food and NFIs **in one month** in the North, the South and in the Bekaa. Total distribution since January 2012 for key items outlined below.

Emergency Assistance by DRC	Quantity since January 2012
Personal Hygiene Kits	253,255
Baby Kits	39,664
Fuel Vouchers	192,509
Mattresses	16,709
Blankets	83,633
Food Vouchers	152,585

## Protection services

Improving the protection climate for Syrian refugees is one of DRC's priorities. In January, individual case management including customized assistance to families in need of material support, assessment and support to new comer families, identification of refugee focal points and border monitoring were provided. In addition, referrals were made to partners for medical, cash assistance and shelter needs and DRC conducted awareness sessions and psycho-social counseling to Syrian refugees.

Specific type of need	Cumulative cases since Jan. 2012
Urgent medical condition	334
Pregnant women	86
Women and Children at risk	201
Physical disability	185
Mental illness and psychosocial needs	316
Chronic disease	76
GBV survivor	37
Security issues/Physical protection	48
<b>Total</b>	<b>1,283</b>

## Livelihoods

Syrian refugees are concentrated in the poorest regions in the country and are facing limited livelihood opportunities. To counter this critical situation, DRC implemented several activities such as skills trainings, awareness sessions, and recreational activities for children, computer and English courses and counseling.

Livelihood support from DRC	Approximate beneficiaries/month (50% Syrian / 50% Lebanese)
Vocational trainings at community centers on sewing, hairdressing, aesthetics	100
Awareness Sessions (including gender based violence, involuntary urination, problems and conflicts between wives and husbands, problems between Parents and children)	200
Recreational activities	180 children
Households supported with cash for rented accommodation	550 families



DRC is continuing following up on community development projects including improving agriculture cooperatives, playground constructions, dispensaries, fish markets etc



## Shelter

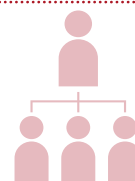
Shelter is one of the key issues facing Syrian refugees, many of whom are still living in rough conditions housed in unfinished buildings, tents or obliged to pay high rental costs for share apartments with three to four families. DRC has focused in January on rehabilitation of dwellings to best protect refugees from the harsh weather, as well as the provision of shelter boxes and collective shelter solutions. 164 shelter boxes were produced locally with the help of refugees who were employed and trained in box construction activities.

Kind of Shelter support	Quantity	Capacity (no. of beneficiaries)
Collective shelters –rehabilitated schools or abandoned buildings	15	1105
Shelter boxes – individual housing units to accommodate a single family	143	715*

\* Some shelters are yet un-occupied to serve as contingency shelters in case of a large influx

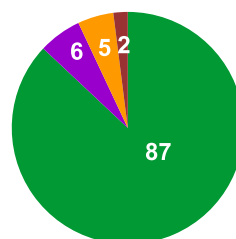
## STAFF ON MISSION

**Total:** 213 (16 expat)  
**North Lebanon:** 104  
**The Bekaa:** 65  
**South Lebanon:** 2  
**Country Office, Beirut:** 42



## CURRENT FUNDING LEVEL

47 million USD



■ Distribution of food and NFIs  
 ■ Protection  
 ■ Shelter  
 ■ Livelihoods



## DRC PARTNERS WITH

**Government of Lebanon and Local authorities:** High Relief Committee, the Ministry of Social Affairs and Municipal Offices  
**UN Agencies:** UNHCR, WFP, UNRWA, UNICEF, UNFPA  
**Donor agencies:** ECHO, DANIDA, BPRM, SDC, Public Danish donations.

**Local partners include:** SHEILD, Association Najdeh, Tadamon

## DONORS



**Working for the Protection of Refugees and Internally Displaced Populations**

Danish Refugee Council  
 5th Floor, ARESO Palace Center  
 Justinian Street, Qintari  
 Hamra, Beirut

Tel / fax: 00961 1 736987  
 00961 1 738289  
 E-mail: drc.lebanon@drclebanon.dk  
 Website: www.drc.dk