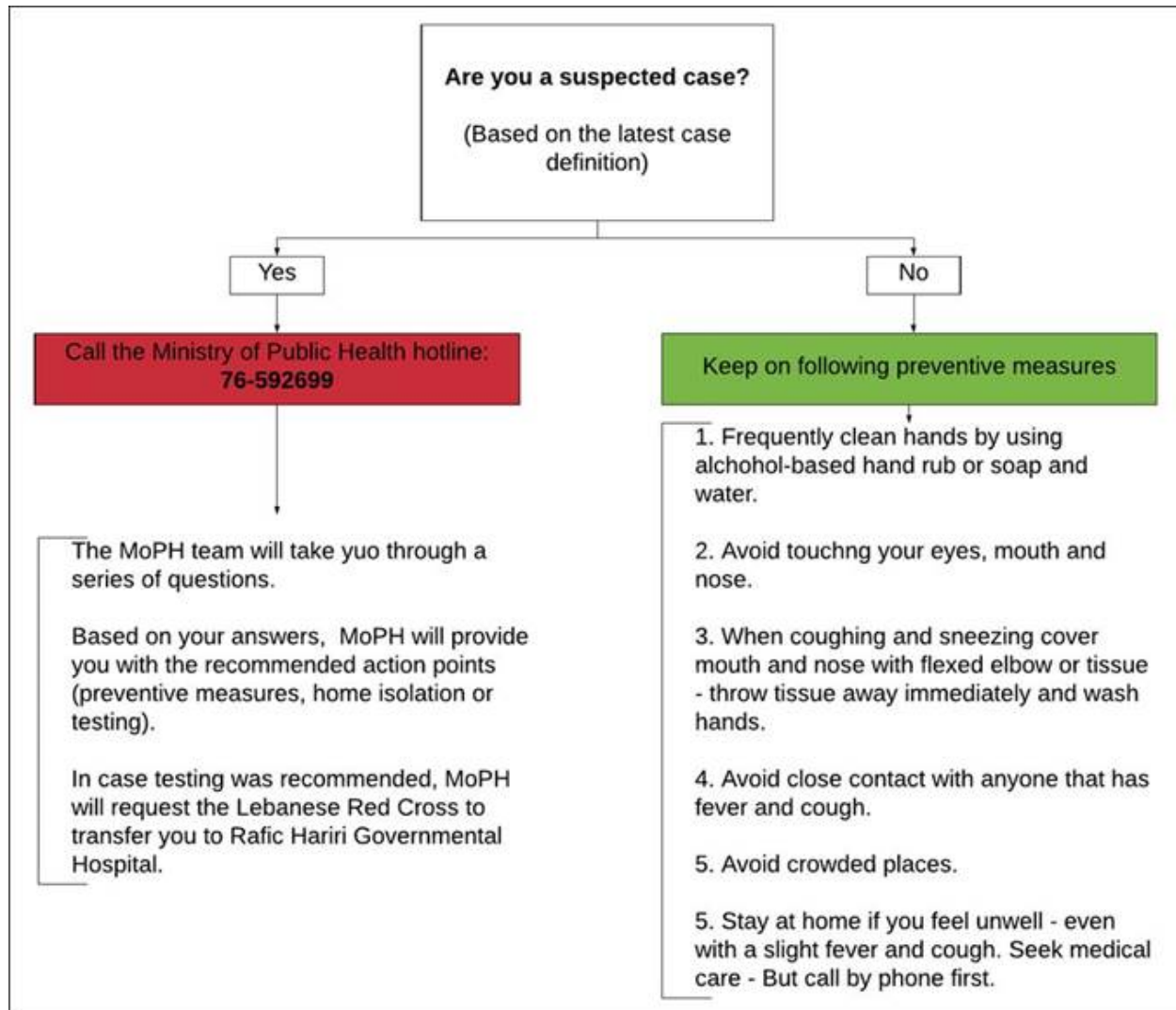




COVID-19 GUIDANCE: How to Refer Suspected Cases?

While the main guidance on how to refer a suspected case is to call the **MoPH call center 76-562966** which will advise accordingly, please find below a guidance on patient management in containment phase. This guidance can be used to help frontline workers to understand the procedure of patient management at different levels. Kindly click the hyperlink for *the case definition* for COVID19 [Suspected Cases](#)*.



For partners that might be receiving symptomatic cases in their centers / premises, please do isolate the case in a separated room and follow the above-mentioned procedure.

Avoid close contact with the case, avoid touching your eyes, nose or mouth, sanitize your hands and the surfaces accordingly.