



“We have a simple message for all countries fighting #COVID19: test, test, test.”

Dr. Tedros, DG, WHO

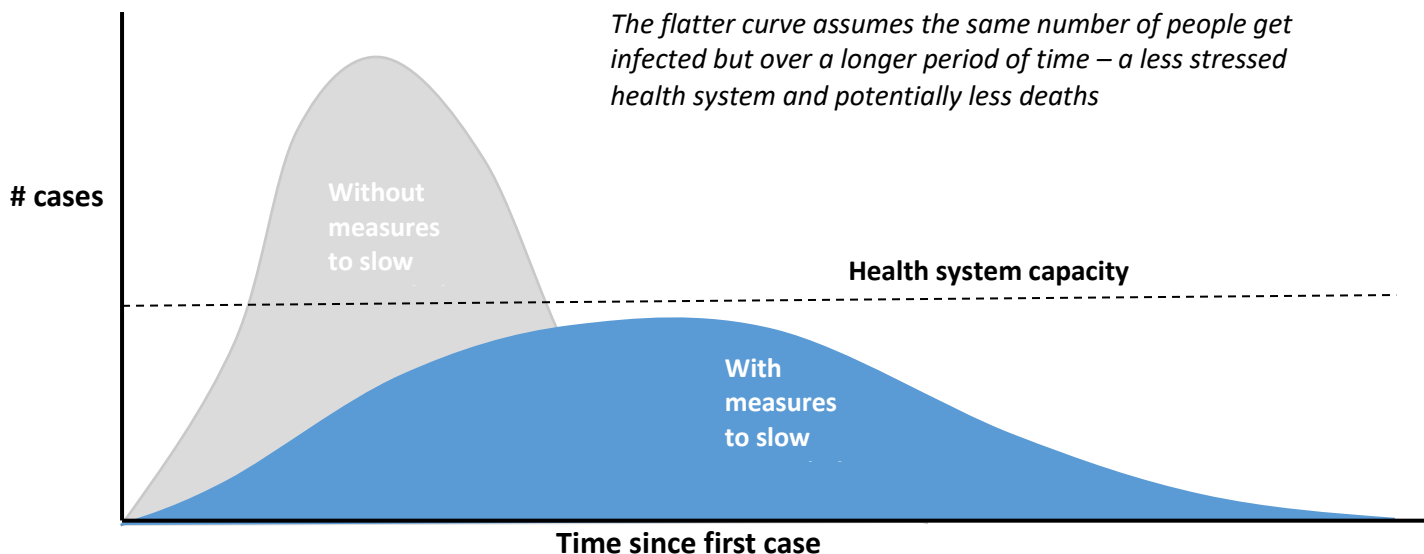


Figure 1. The steep curve represents exponential spread of the virus – the local health system will quickly become overloaded beyond its capacity to treat people.

LEBANON COVID-19 statistics as of 18 March 2020 3:00 pm		Regional updates		Global update	
Positive cases	133 (13 New)	Total cases	19,451 (1,432 new)	Globally cases	194,029 (20,685 new)
Total clinical recovery *	10	Total Deaths	1,161 (291 new)	Cases reported from	164 countries (12 new)
Total recovery**	3	Countries infected	19 countries (Djibouti new)	Total deaths	7,873 (854 new) (CFR: 3.4%)
Total Deaths	4	Cases by country today	1,322	Confirmed cases in China	82,007 (891 new)
Call Centre	2,320 (140 New)	<i>Iran 1,192, Bahrain 19, Jordan 12, Morocco 5, Kuwait 12, Lebanon 13, Occupied Territories 3, Pakistan 54 and Tunisia 5.</i>			
Call Centre Referrals to RHUH	192 (9 New)	Deaths by country today	149		
		<i>Iran 147, Lebanon 1 and Iraq 1.</i>			
<p>* Clinical Recovery: Patients no longer showing clinical signs and symptoms</p> <p>**Recovery: Patients clinically recovered and testing negative on 2 consecutive PCR tests</p>					



Figure 1: Cases by date of confirmation

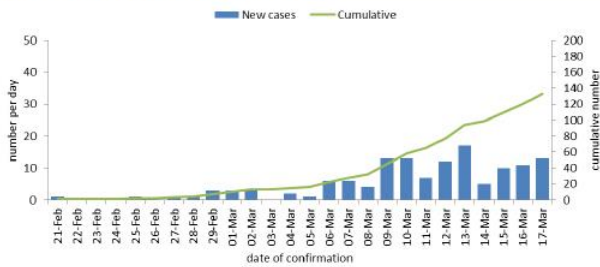


Figure 2: Cases by age group (%)

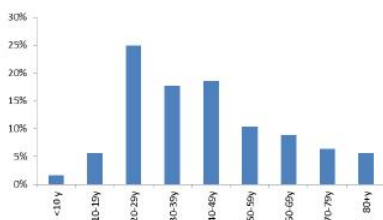


Figure 3: Cases by gender

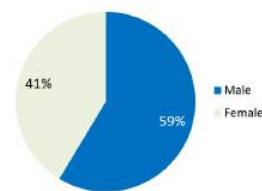


Figure 5: Cases mapping by caza of residence

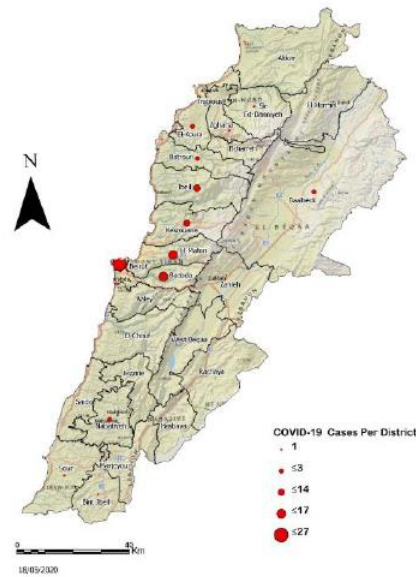
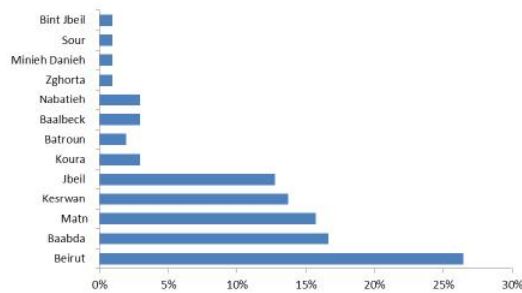
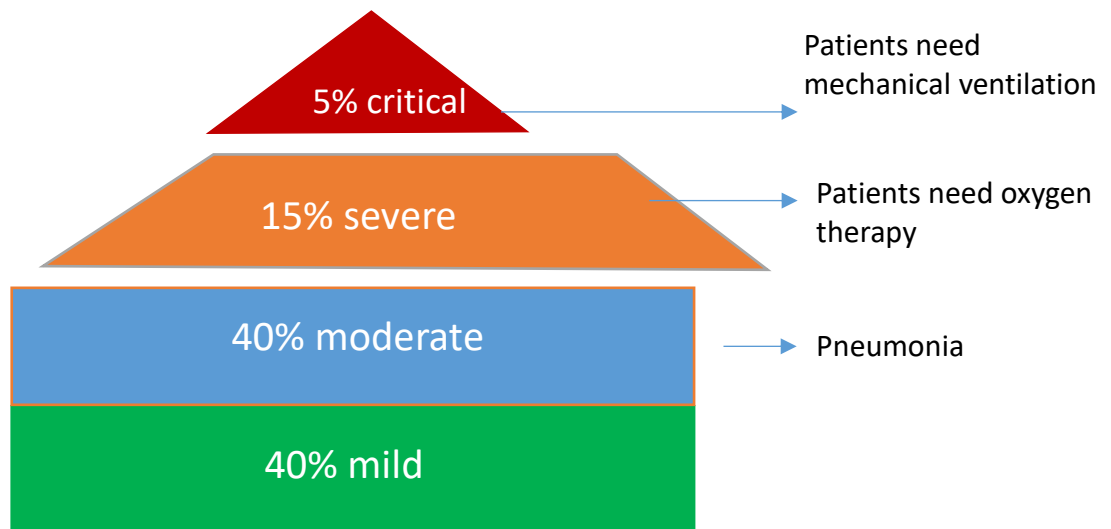


Figure 4: Cases by caza of residence (%)



Lebanon: COVID-19 Status 21 Feb-18 Mar 2020

Rationale: severity profile for COVID 19



Technical guidelines

Technical Areas of Work	Reference/attachment
WHO recommendations for testing for COVID-19	WHO recommends to test all suspect cases and contacts who develop symptoms.
Criteria for a negative case	WHO recommends that all confirmed cases (regardless of severity of disease) need to have 2 negative PCR tests at least 24 hours apart and clinical recovered before they can be released from hospital or home isolation. In the non-health care setting where testing is not possible, WHO recommends that confirmed patients remain isolated for an additional two weeks after symptoms resolve. We are modifying our home care guidance to include a statement about this.
Quarantine of close contacts	WHO recommends that close contacts of confirmed cases are isolated in a quarantine facility . If it is not possible to quarantine in specialized facilities, then home quarantine can be used. All close contacts should monitor for signs/symptoms and be tested according to WHO case definitions . In addition, we realize that some countries/areas are facing community transmission and are working on finalizing guidance for Laboratory Testing Prioritization and Clinical/IPC Concept of Operations according to the 4Cs transmission scenarios . We will share these as soon as possible.

ATTENTION!!

The virus is transmitted through small droplets (tiny liquid particles) from the nose or mouth which are spread when a person with COVID-19 coughs or exhales. These droplets are relatively heavy; they do not travel in the air more than 1.5 meters, and they fall on surfaces; that is why WHO recommends regular hand washing, practicing social distancing, cough etiquette, and disinfection of high touch surfaces. The only risk for airborne transmission of this virus is in medical facilities during certain medical procedures (like intubation, suction, etc..) that generate aerosols which are very tiny particles sprayed in the air. This is why the WHO recommends the use of certain advanced personal protective equipment in healthcare settings such as N95 masks.



Useful Links	Important numbers	
➤ WHO real time dashboard	➤ MOPH Hotline 1214	➤ Preventive medicine center 01-843769 01830300
➤ WHO COVID-19 page	➤ Airport quarantine section 01-629352	➤ Call Centre 76-592699
➤ Protect yourself (English/Arabic)	➤ Preventive medicine center 01-843769 01830300	➤ Epidemiological Surveillance Unit 01-614194 01-614196
➤ Q&A (English/Arabic)	➤ Call Centre 76-592699	
➤ WHO Lebanon website		
➤ WHO Lebanon Facebook Twitter Instagram		

For more information Hala Habib | Communication Consultant | +961 3 870459