



“We've consistently said that we’re all in this COVID19 pandemic together & we can only succeed as one. We need an all-of-society approach, with everyone playing their part, including the entertainment industry.”- Dr. Tedros Adhanom Ghebreyesus

Highlight

- A total of 116,220 (3,554 today) confirmed cases from 22 countries in the East Mediterranean Region and total deaths are at 5,667 (106 today).
- Lebanon is still in level 3 of COVID 19 transmission scenarios “Lebanon is experiencing cases clusters in time, geographic location and/or common exposure (Clusters of cases)”.
- A new batch of Personal Protective Equipment PPEs arrived yesterday from WHO Dubai Hub and was delivered to the MOPH preventive medicine department. It included sets of surgical masks, goggles, protective shields, nitrile gloves and gowns to serve a total of around 120 patients.
- Currently, **139** COVID-19 cases have been reported as recovered by hospitals; this number might however underestimate the true number of recoveries in self-isolation.
- A total of 1,070 tests performed today. The breakdown is as follows:
 - 1,070 residents 5 tested positive (0.5%)
 - 0 expatriated tested

Global update	
as per WHO dashboard_ 17 April 2020 at 6pm	
Globally cases	2,074,529 (77,846 new)
Countries, areas or territories with cases	213 countries
Total deaths	135,163 (8,493 new)
Confirmed cases in China	84,149 (352 new)
Confirmed cases in USA	632,781 (28,711)
Confirmed cases in Spain	182,816 (5,183)
Confirmed cases in Italy	168,941 (3,786)
WHO RISK ASSESSMENT Global Level - Very High	



SAVE THE DATE Saturday, 18 April 2020
'One World: Together at home'

WHO, Lady Gaga and Global Citizen have announced a concert to air on Saturday, 18 April 2020 titled **'One World: Together at home'**. This globally televised and streamed special will highlight unity among all people affected by COVID-19, celebrate the brave healthcare workers doing life-saving work, and raise funds for the response.

One World: #TogetherAtHome is a historic, global broadcast to support the fight against #COVID19. The entire Special will be streamed at www.youtube.com/WHO and on WHO’s main social media channels.

Distribution of COVID-19 cases as reported by the Epidemiological Surveillance Unit at the MOPH dashboard at 4pm

COVID-19 Surveillance in Lebanon

17 APRIL 2020 UPDATE

Figure 1: Cases by age group

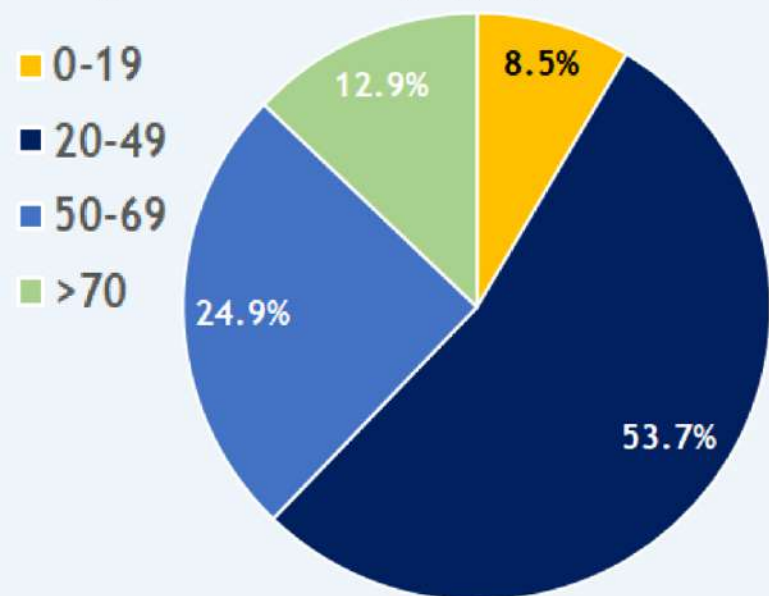
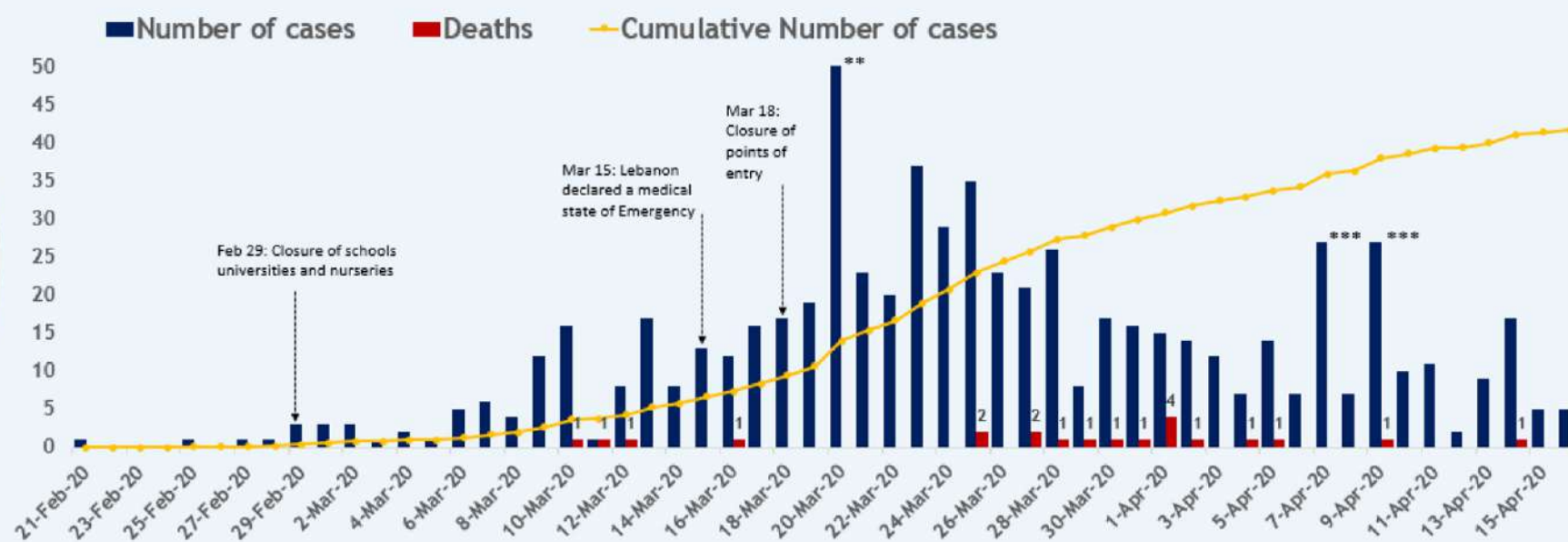


Figure 4: Cases by date of confirmation



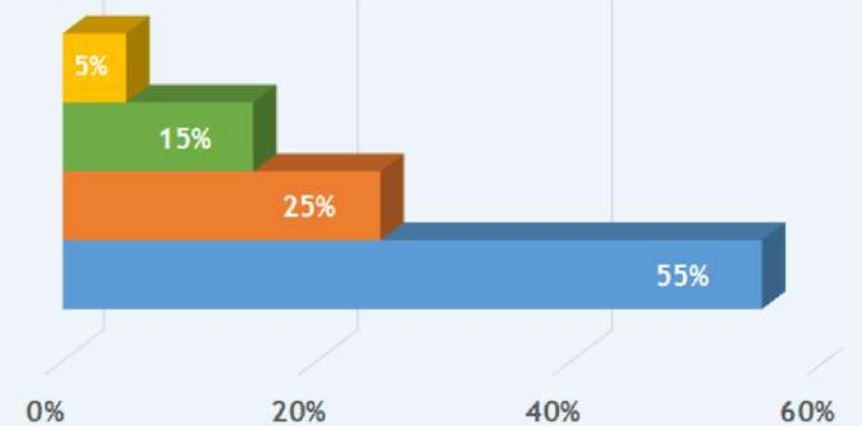
668 Cumulative cases of COVID-19

- 5 new cases
- 52 healthcare workers
- 21 associated deaths

Call center:

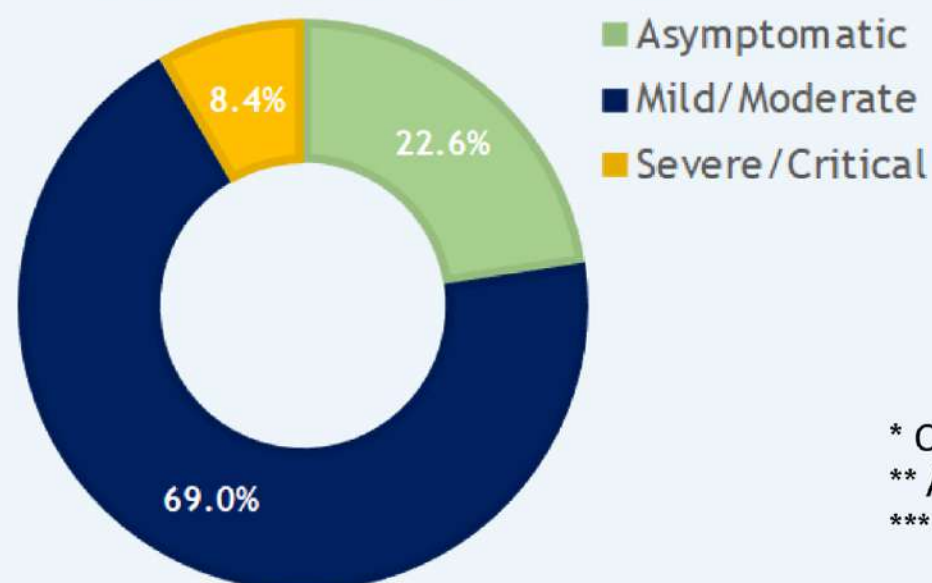
- 5808 Cumulative calls received
- 410 referred to RHUH

Figure 2: Cases by source of exposure



■ Unidentified Source ■ Under Investigation*
 ■ Travel Related ■ Contact with Confirmed Case

Figure 3: Cases by clinical presentation



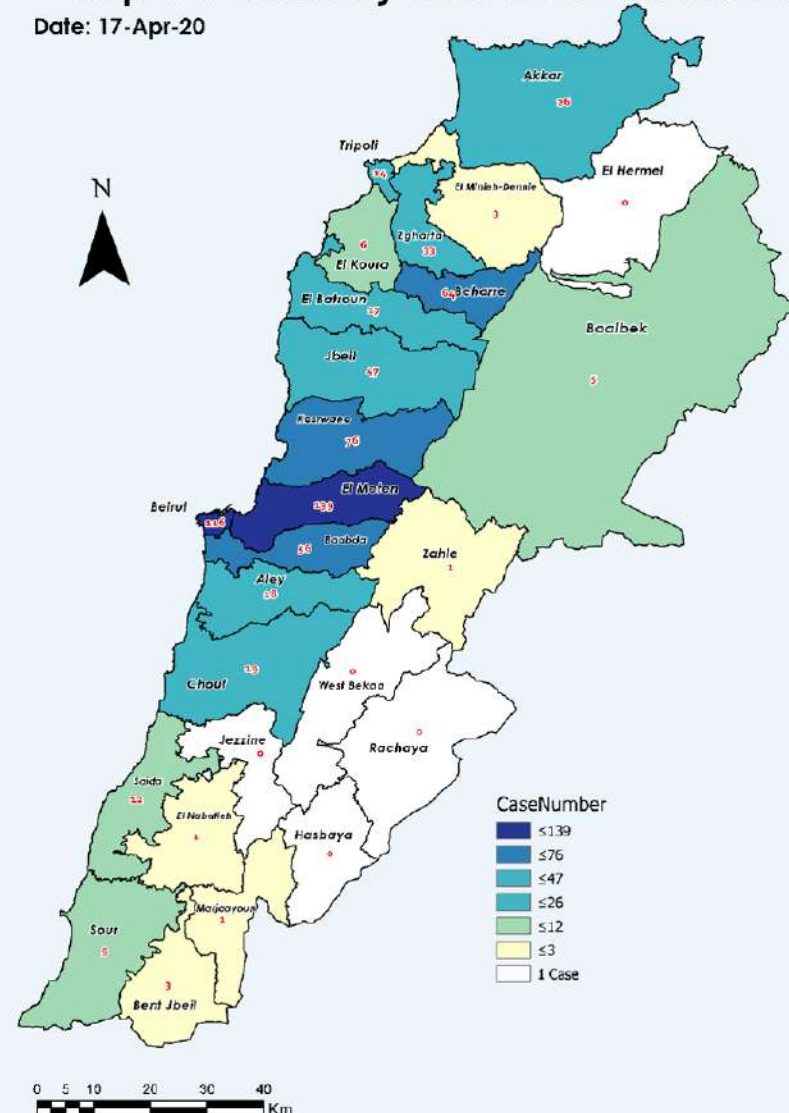
■ Asymptomatic
 ■ Mild/Moderate
 ■ Severe/Critical

Table 1: Distribution of fatalities by age group

Age (years)	Deaths (n)	CFR
<10y	0	0.0%
10-19y	0	0.0%
20-29y	0	0.0%
30-39y	0	0.0%
40-49y	1	1.0%
50-59y	4	3.9%
60-69y	3	4.7%
70-79y	7	13.5%
80+y	6	17.6%
Total	21	3.1%

* Cases under investigation have not yet been classified by exposure
 ** Addition of new reporting laboratories
 *** Massive testing of repatriates

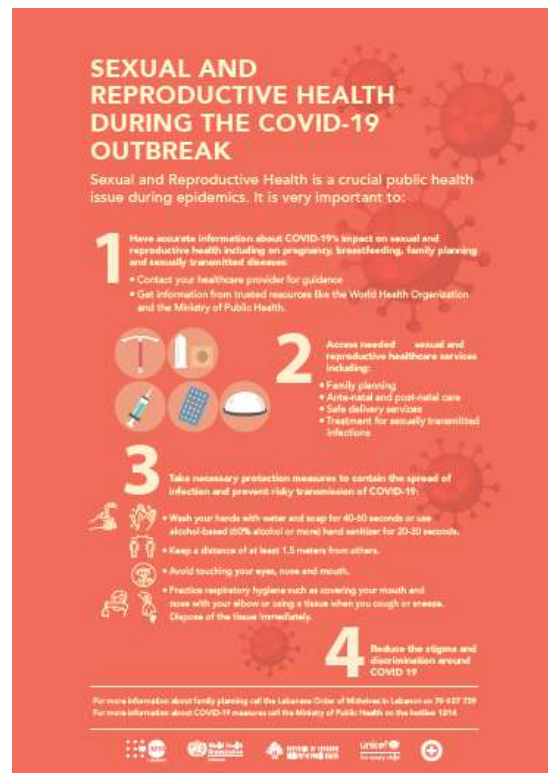
Map 1: Cases by district of residence



Sexual and Reproductive Health services during the COVID19 pandemic

Sexual and Reproductive Health (SRH) information and services are life-saving and important at all times. Since sexual activity does not cease with the COVID-19 pandemic, it is crucial to ensure that people are able to access rights-based SRH services and information to initiate or continue use of contraception. By preventing the negative health consequences associated with unintended pregnancies and sexually transmitted infections, contraception can help alleviate unnecessary additional pressure on already-stretched health systems which are working hard to address COVID-19. Please click on this [link](#) to find WHO responses to frequently asked questions around contraceptives and family planning during the COVID 19 pandemic.

In the current pandemic, the world is experiencing an unprecedented demand on individuals to play a greater role in protecting their own health. In addition to the COVID-19 specific self-care measures (such as physical distancing, good respiratory hygiene, and hand washing) there are many other areas, especially for SRH in which people may play an important role in protecting their own health. In 2019 WHO published guidance on self-care interventions highlighting the importance of promoting self-care in SRH ([link to guide](#))



In Lebanon the Ministry of Public Health (MOPH) is working on ensuring that there is no interruption in the Reproductive Health commodities at primary health care centers and dispensaries providing RH services. UNFPA partnered with the Lebanese Order of Midwives to ensure family planning advice and counselling for women and men during the COVID-19 crisis. Anyone in need for advice or counselling on family planning can call the hotline 70 037739 to get answers and proper advice about contraceptives. Moreover, SRH information material have been developed by the MOPH, WHO, UNFPA, UNICEF and the Lebanese Red Cross and are being disseminated in health facilities and through social media [platforms](#).

Useful Links	Important numbers	
<ul style="list-style-type: none"> ➤ WHO real time dashboard ➤ WHO COVID-19 page ➤ Protect yourself (English/Arabic) ➤ Q&A (English/Arabic) ➤ WHO Lebanon website ➤ WHO Lebanon Facebook Twitter Instagram 	<ul style="list-style-type: none"> ➤ MOPH Hotline 1214 ➤ Airport quarantine section 01-629352 ➤ Preventive medicine center 01-843769 01830300 	<ul style="list-style-type: none"> ➤ Call Centre 01-594459 ➤ Preventive medicine center 01-843769 01-830300 ➤ Epidemiological Surveillance Unit 01-614194 01-614196
<p>For more information Hala Habib Communication Consultant +961 3 870459</p>		